

Index:

PCH-10 _____	Page	3
PCH-25 _____	Page	3
PCH-25/38 _____	Page	4
PCH-26 _____	Page	4
PCH/M-28 _____	Page	5
PCH/M-35 _____	Page	6
PCH/M-75 _____	Page	7
PCH/M-76 _____	Page	8
PCH/M-100XL _____	Page	9
PCH/M-40 _____	Page	10
PCH/M-60 _____	Page	11
PCH/M-80 _____	Page	12
PCH/M-120 _____	Page	13
PCH/M-70 _____	Page	14
PCH/M-140 _____	Page	15
PCH-145 _____	Page	16
PCM-145 _____	Page	17
PCH/M-150 _____	Page	18
Maximizer 300 _____	Page	19 to 21
PCH-20 _____	Page	22
PCH-30 _____	Page	22
PCH-50 _____	Page	22
PCH/M-100 _____	Page	23
PCH/M-51 _____	Page	24
PCH/M-52 _____	Page	25
PCH-52P _____	Page	26
PCH-53P _____	Page	26
PCH/M-53 _____	Page	27
PCH/M-4B(T) _____	Page	28
PCH/M-6B _____	Page	29
M-200 _____	Page	30

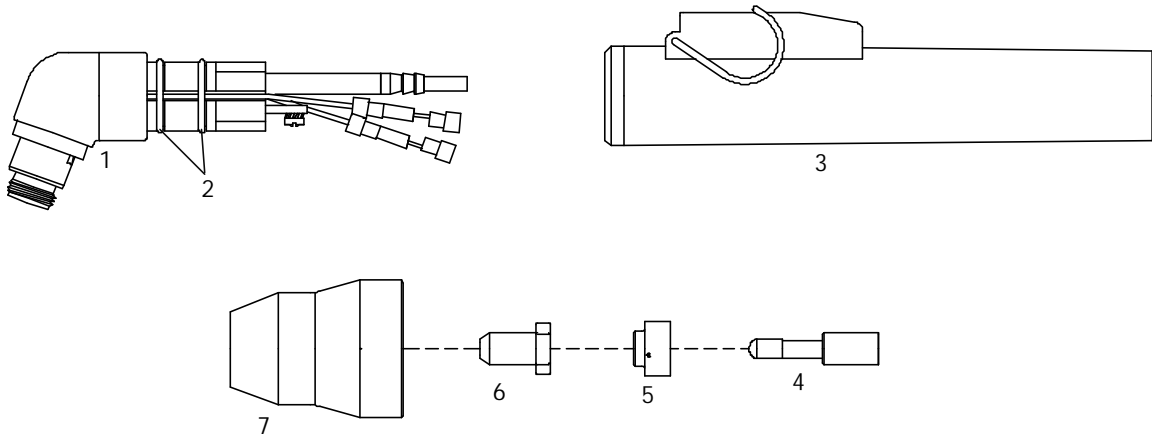
ACCESSORIES:

Circle Cutting Attachment _____	Page	31
---------------------------------	------------	----

UNIT/TORCH COMPARISON FOR THERMAL DYNAMICS CUTTING SYSTEMS

Unit	Torch	Unit	Torch
4Xi	PCH/M51	Pak-1250XR	PCH/M52
6Xi	PCH/M51	Pak-1250XR	PCH52P
CC-65	M-200	Pak-15XC	PCH/M-150
CC-66	M-200	Pak-15XC W/Max 300 retrofit	PCM/145
Cougar 125	PCH-10	Pak-2XT	PCH20
Cut Master 80XL	PCH/M75	Pak-3	PCH30
Drag-Gun	PCH-10	Pak-3XR	PCH/M51
Drag-Gun 38	PCH-25/38	Pak-44	PCH/M6B
Dynapak 110	PCH20	Pak-45	PCH/M6B
Econopak 100	PCH/M76	Pak-5	PCH50
Econopak 25	PCH-25	Pak-5 (Mech)	PCH/M4B(T)
Econopak 50	PCH-26	Pak-5XR Dual Gas	PCH/M52
Merlin 1000	Maximizer 300	Pak-5XT	PCH/M51
Merlin 3000	PCM/145	Pak-625XR	PCH/M75
Merlin 3000	Maximizer 300	Pak-625XR	PCH/M51
Merlin 6000	Maximizer 300	Pak-625XR Dual Gas	PCH/M52
Merlin 6000GST	Maximizer 300	Pak-6XR	PCH/M51
Pak Master 100	PCH53PPak	Pak-6XR Dual Gas	PCH/M52
Master 100	PCH/M53	Pak-750XR	PCH/M51
Pak Master 100XL	PCH/M100XL	Pak-750XR Dual Gas	PCH/M52
Pak Master 100XL Plus	PCH/M80	Pak-7XR	PCH/M51
Pak Master 150XL	PCH/M120	Pak-7XR Dual Gas	PCH/M52
Pak Master 25	PCH-25 Pak	Pak-8XR	PCH/M52
Master 38XL	PCH-25/38	Pak-Master 50XL	PCH/M-28
Pak Master 50XL Plus	PCH/M40	Pak Master 50	PCH/M35
Pak Master 75	PCH/M75	Stak Pak	PCH/M35
Pak Master 75XL	PCH/M75	Stak Pak	PCH/M70
Pak Master 75XL Plus	PCH/M60	Stak Pak	PCH/M140
Pak-10	PCH/M4B(T)	Stak Pak	PCH/M145
Pak-1000XR	PCH/M52	TA-500	M-200
Pak-10XR	PCH/M100	TAC-500	M-200
Pak-10XR	PCH/M52	TD750	PCM/145
Pak-10XR (Mech)	PCH/M4B(T)		

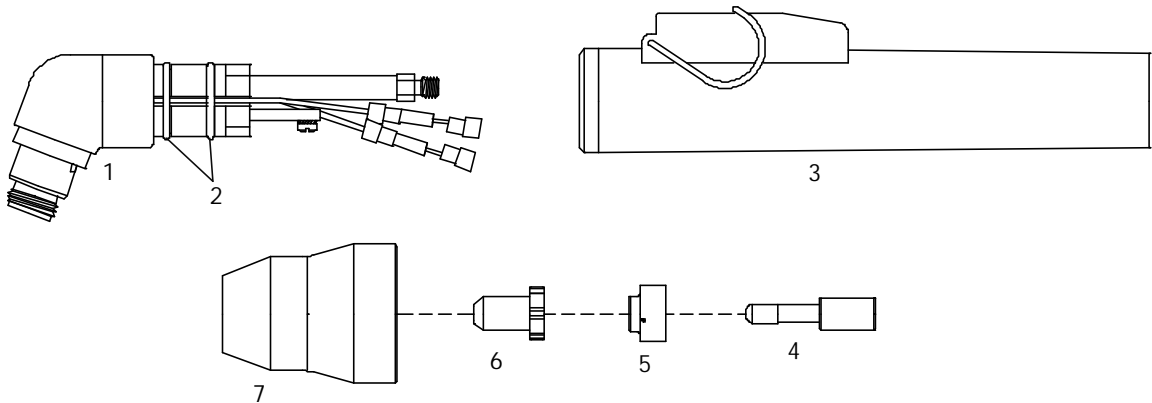
PCH-10 Drag-Gun, Cougar 125



Item	Ref.	Code	Description
N/S	2-1020	05-102-1020	Hand torch complete with 20' (6 mts) cable
1	9-0016	05-109-0016	70° Torch head
2	8-0533	05-108-0533	O-Ring (20 pcs.)
3	9-0019E	05-109-0019	Handgrip complete with microswitch
4	9-6006	05-109-6006	Electrode - Hf
5	9-6007	05-109-6007	Gas Distributor - VESPEL ®
6	9-6099	05-109-6099	Tip - Air
7	9-6003	05-109-6003	Shield Cup

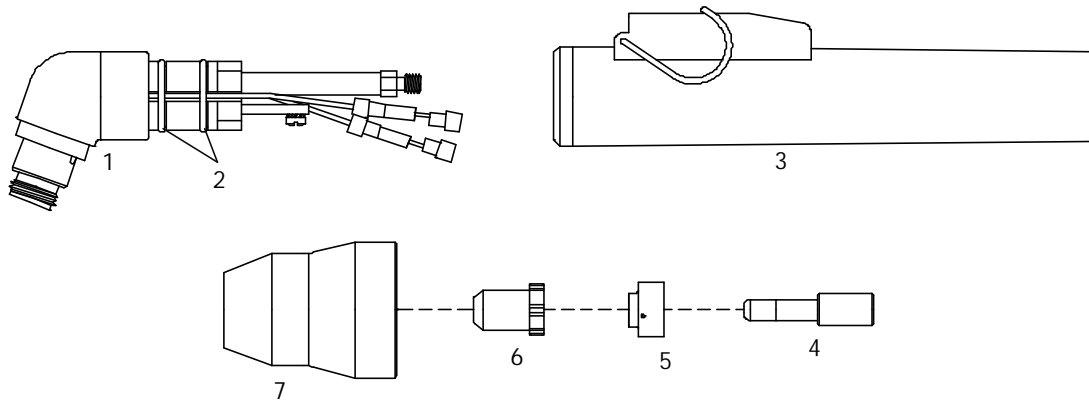
* CIRCLE CUTTING ATTACHMENT : See Page # 31

PCH-25 Econopak 25, Pak Master 25



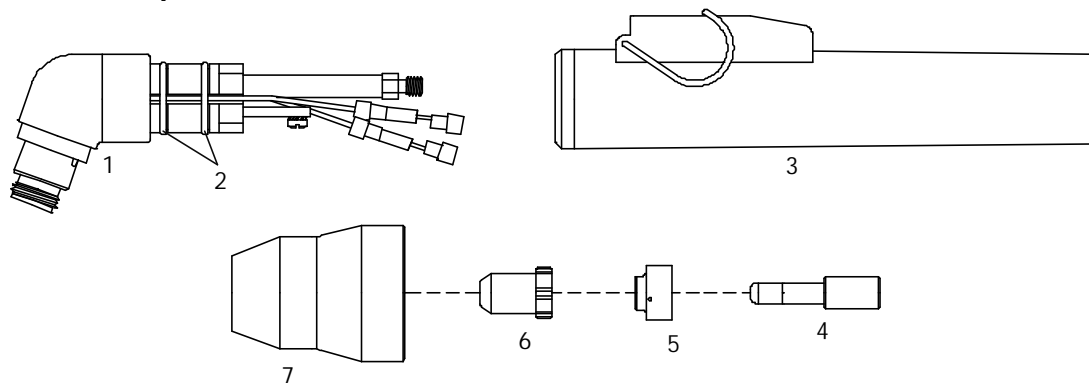
Item	Ref.	Code	Description
N/S	2-0250	05-102-0250	Hand torch complete with 12.5' (3.8 mts) cable
N/S	2-0251	05-102-0251	Hand torch complete with 25.0' (7.5 mts) cable
1	9-5807	05-109-5807	70° Torch head
2	8-0533	05-108-0533	O-Ring (20 pcs.)
3	9-6282E	05-109-0019	Handgrip complete with microswitch
4	9-6006	05-109-6006	Electrode - Hf
5	9-6007	05-109-6007	Gas Distributor - VESPEL ®
6	9-4476	05-109-4476	Tip - Air
7	9-6003	05-109-6003	Shield Cup
N/S	4-6067	05-104-6067	Air and power cable 12.5' (3.8 mts) - Hand torch
N/S	4-6068	05-104-6068	Air and power cable 25.0' (7.5 mts) - Hand torch

* CIRCLE CUTTING ATTACHMENT : See Page # 31

PCH-25/38 Pak Master 38XL, Drag-Gun 38

Item	Ref.	Code	Description
N/S	2-0380	05-102-0250	Hand torch complete with 12,5' (3.8 mts)
N/S	2-0381	05-102-0251	Hand torch complete with 25' (7.5 mts)
1	9-5807	05-109-5807	70° Torch head
2	8-0533	05-108-0533	O-Ring (20 pcs.)
3	9-6282E	05-109-0019	Handgrip complete with microswitch
4	9-6506	05-109-6506	Electrode - Hf
5	9-6507	05-109-6507	Gas Distributor - VESPEL ®
6	9-6501	05-109-6501	Tip - Air
7	9-6003	05-109-6003	Shield Cup
N/S	4-6067	05-104-6067	Air and power cable 12.5' (3.8 mts) - Hand torch
N/S	4-6068	05-104-6068	Air and power cable 25' (7.5 mts) - Hand torch

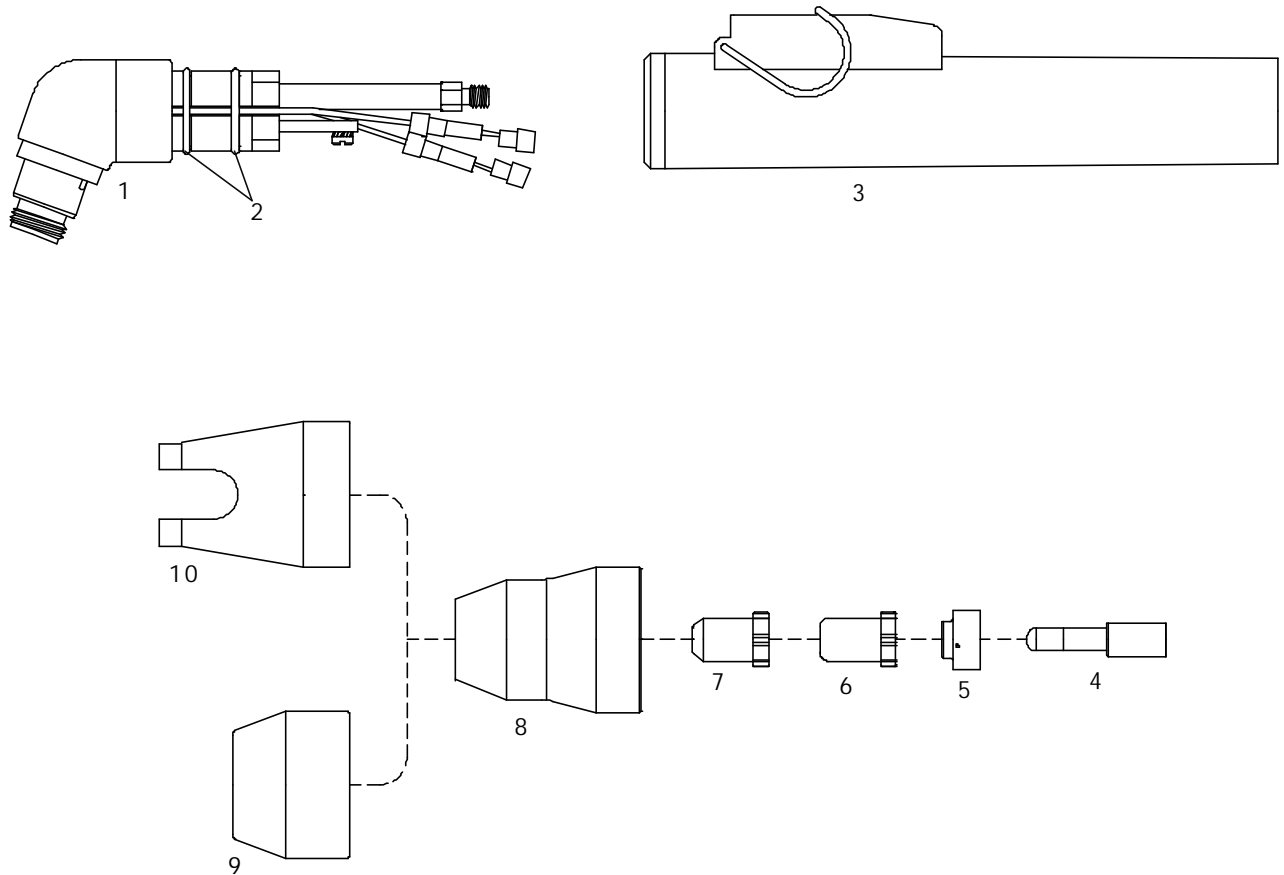
* CIRCLE CUTTING ATTACHMENT : See Page # 31

PCH-26 Econopak 50

Item	Ref.	Code	Description
N/S	2-3501	05-102-3501	Hand torch complete with 12,5' (3.8 mts)
N/S	2-3511	05-102-3511	Hand torch complete with 25.0' (7.5 mts)
1	9-5807	05-109-5807	70° Torch head
2	8-0533	05-108-0533	O-Ring (20 pcs.)
3	9-6282E	05-109-0019	Handgrip complete with microswitch
4	9-6506	05-109-6506	Electrode - Hf
5	9-6507	05-109-6507	Gas Distributor - VESPEL ®
6	9-6501	05-109-6501	Tip - Air
7	9-6003	05-109-6003	Shield Cup
N/S	4-6071	05-104-6071	Air and power cable 12.5' (3.8 mts) - Hand torch
N/S	4-6072	05-104-6072	Air and power cable 25.0' (7.5 mts) - Hand torch

* CIRCLE CUTTING ATTACHMENT : See Page # 31

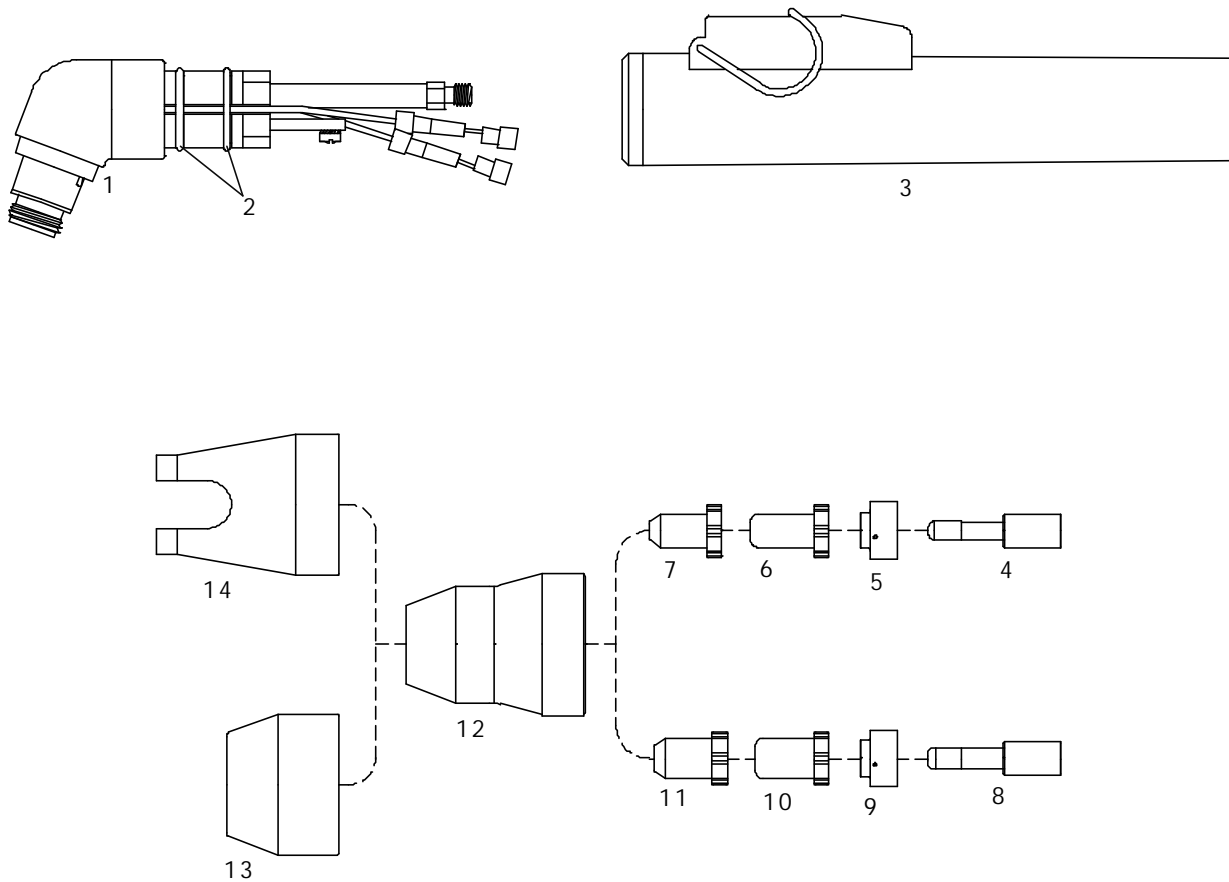
PCH/M-28 Pak Master 50XL



Item	Ref.	Code	Description
N/S	2-5801	05-102-5801	Hand torch complete with 25' (7.5 mts) cable
N/S	2-5802	05-102-5802	Hand torch complete with 50' (15.0 mts) cable
1	9-5807	05-109-5807	70° Torch head
2	8-0533	05-108-0533	O-Ring (20 pcs.)
3	9-6291E	05-109-0019	Handgrip complete with microswitch
4	9-6506	05-109-6506	Electrode - Hf (long life)
5	9-6507	05-109-6507	Gas Distributor - VESPEL ® (long life)
6	9-6500	05-109-6500	Tip - Standoff (long life)
7	9-6501	05-109-6501	Tip - Drag (long life)
8	9-6003	05-109-6003	Shield Cup - Std
9	9-6503	05-109-6503	Shield Cup - Maximum Life (requires 05-109-6003)
10	9-6004	05-109-6004	Shield Cup - Crown (requires 05-109-6003)
N/S	4-2995	05-104-2995	Air and power cable 25' (7.5 mts) - Hand torch
N/S	4-2996	05-104-2996	Air and power cable 50' (15.0 mts) - Hand torch

* CIRCLE CUTTING ATTACHMENT : See page # 31

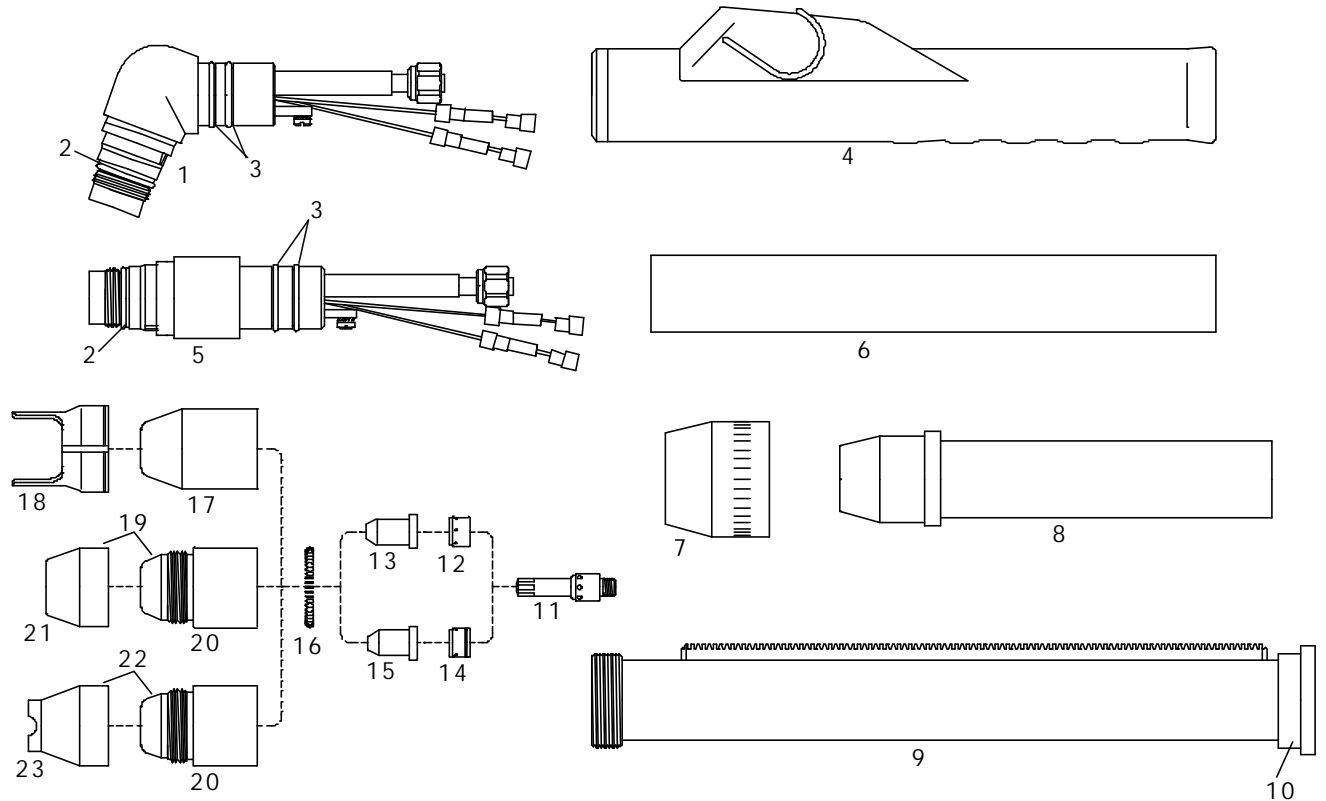
PCH/M-35 Pak Master 50, Stak Pak



Item	Ref.	Code	Description
1	9-5807	05-109-5807	70° Torch head
2	8-0533	05-108-0533	O-Ring (20 pcs.)
3	8-4305E	05-109-0019	Handgrip complete with microswitch
4	9-6006	05-109-6006	Electrode - Hf
5	9-6007	05-109-6007	Gas Distributor - VESPEL ®
6	9-6000	05-109-6000	Tip - 35 Amp. Air
	9-6002	05-109-6002	Tip - Gouging - Groove Air
7	9-6001	05-109-6001	Tip - Drag Cut Air
8	9-6506	05-109-6506	Electrode - Hf (long life)
9	9-6507	05-109-6507	Gas Distributor - VESPEL ® (long life)
10	9-6500	05-109-6500	Tip - Standoff (long life)
11	9-6501	05-109-6501	Tip - Drag (long life)
12	9-6003	05-109-6003	Shield Cup - Std
13	9-6503	05-109-6503	Shield Cup - Maximum Life (requires 05-109-6003)
14	9-6004	05-109-6004	Shield Cup - Crown (requires 05-109-6003)

* CIRCLE CUTTING ATTACHMENT : See page # 31

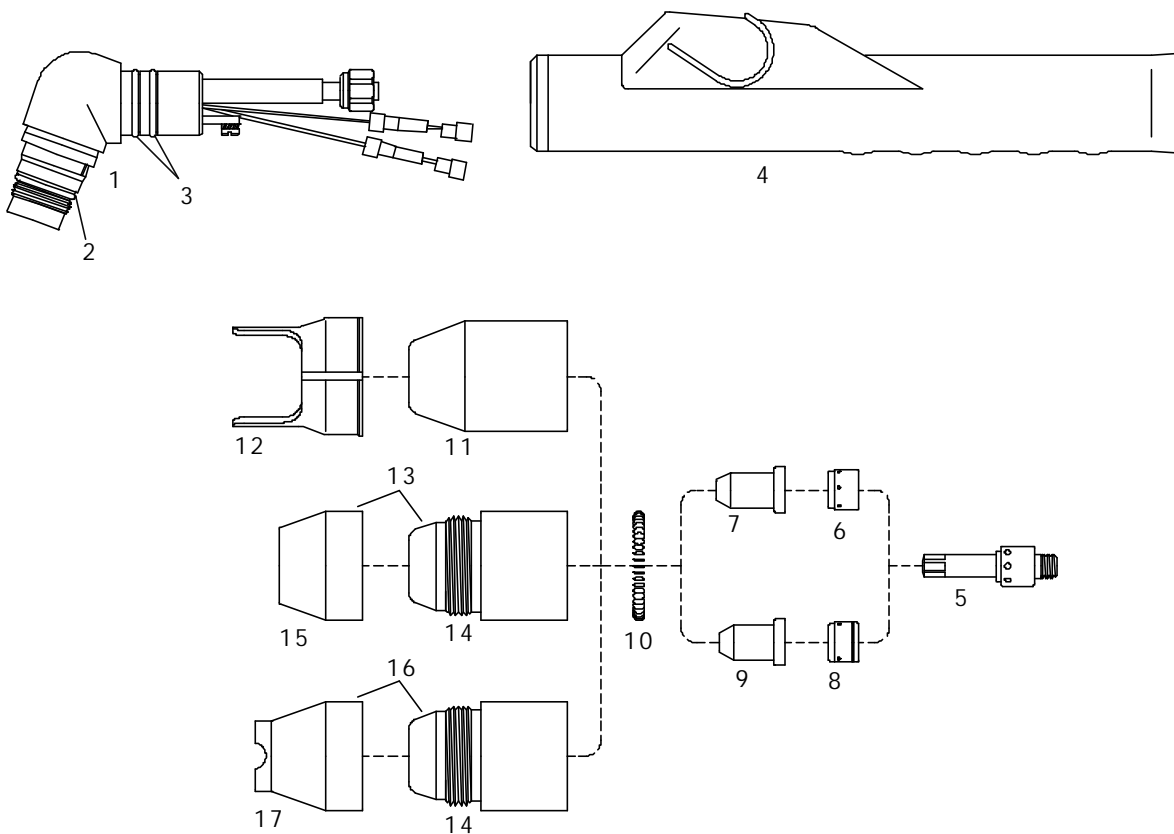
PCH/M-75 Pak Master 75, Pak Master 75XL, 625XR, Cut Master 80XL



Item	Ref.	Code	Description
N/S	2-7801	05-102-7801	Hand torch complete with 25' (7.5 mts) cable
N/S	2-7802	05-102-7802	Hand torch complete with 50' (15.0 mts) cable
N/S	2-7805	05-102-7805	Machine torch complete with 25' (7.5 mts) cable, (with handle item 6)
N/S	2-7806	05-102-7806	Machine torch complete with 50' (15.0 mts) cable, (with handle item 6)
1	8-7510	05-108-7510	70° Torch Head
2	8-0532	05-108-0532	O-Ring (Shield Cup), (20 pcs.)
3	8-0533	05-108-0533	O-Ring (Handle), (20 pcs.)
4	9-5636E	05-109-5636	Handgrip complete with microswitch (incl. 9-5636, 9-7502, 8-1322)
5	8-7512	05-108-7512	180° Torch Head
6	9-5637E	05-109-5637	Machine handle
7	8-4018	05-108-4018	Nut
8	9-5637	05-109-5637	Adaptor
9	8-5005	05-108-5005	Positioning tube
10	8-4204	05-108-4204	End Cap
11	8-7502	05-108-7502	Electrode, long life, (Pat. Pending)
12	8-7501	05-108-7501	Gas distributor, cutting - VESPEL®
13	8-7503	05-108-7503	Tip, cutting 35A - ϕ 0,99 - .039
	8-7504	05-108-7504	Tip, cutting 55A - ϕ 1,17 - .046
14	8-7508	05-108-7508	Gas distributor, gouging - VESPEL®
15	8-7506	05-108-7506	Tip, Gouging - ϕ 1,86 - .073
16	9-7501E	05-109-7501E	Coil spring (10 pcs.)
17	8-7500	05-108-7500	Shield cup
18	8-7575	05-108-7575	Double pointed spacer
19	8-7496	05-108-7496	Shield cup maximum life, complete
20	8-7498	05-108-7498	Shield cup body
21	8-7497	05-108-7497	Heat shield (copper)
22	8-7507	05-108-7507	Crown shield cup assembly
23	8-7499	05-108-7499	Crown cup shield (copper)
N/S	4-7801	05-104-7801	Air and power cable 25' (7.5 mts) - Hand torch
N/S	4-7802	05-104-7802	Air and power cable 50' (15.0 mts) - Hand torch
N/S	4-7803	05-104-7803	Air and power cable 25' (7.5 mts) - Machine torch
N/S	4-7804	05-104-7804	Air and power cable 50' (15.0 mts) - Machine torch

* CIRCLE CUTTING ATTACHMENT : See page # 31

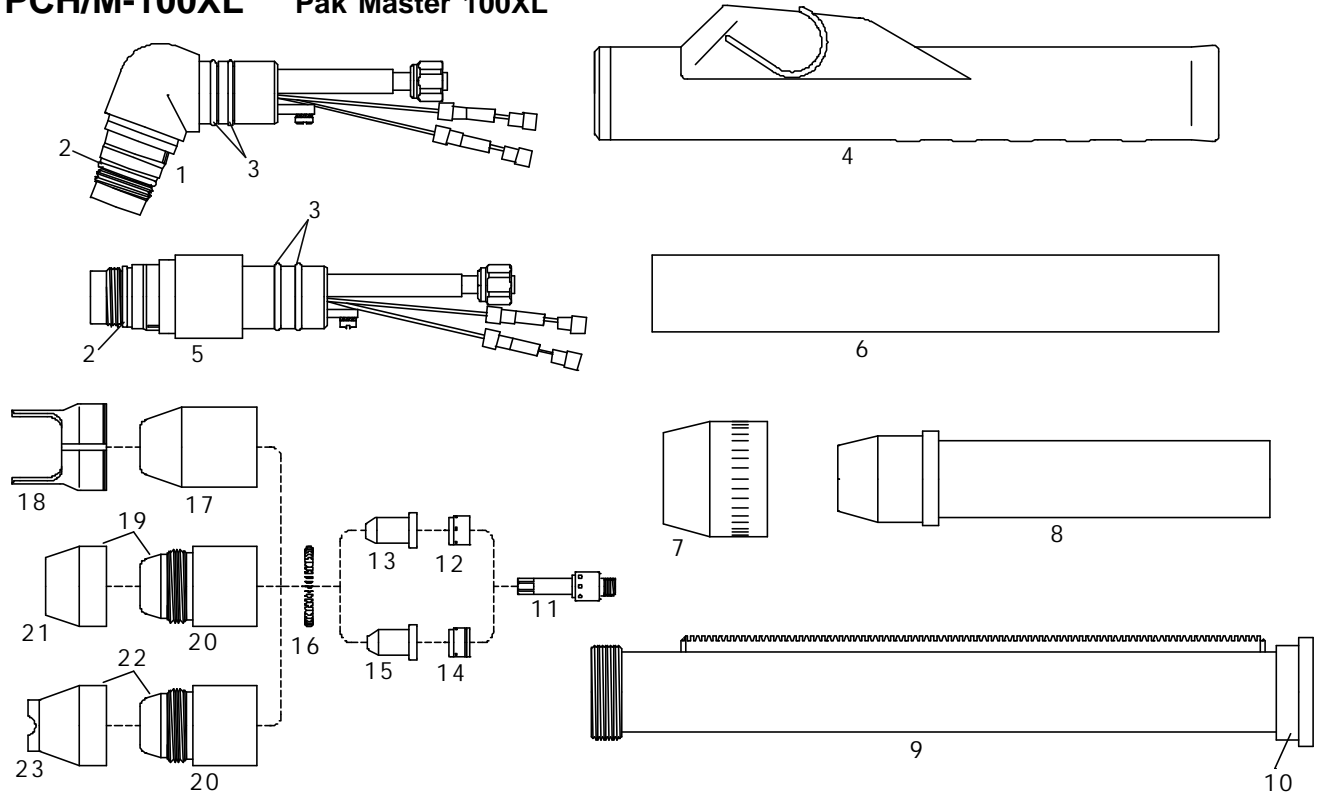
PCH/M-76 Econopak 100



Item	Ref.	Code	Description
N/S	2-7811	05-102-7801	Hand torch complete with 25' (7.5 mts) cable
N/S	2-7812	05-102-7802	Hand torch complete with 50' (15.0 mts) cable
1	8-7510	05-108-7510	70° Torch Head
2	8-0532	05-108-0532	O-Ring (Shield Cup), (20 pcs.)
3	8-0533	05-108-0533	O-Ring (Handle), (20 pcs.)
4	9-5636E	05-109-5636	Handgrip complete with microswitch (incl. 9-5636, 9-7502, 8-1322)
5	8-7502	05-108-7502	Electrode, long life, (Pat. Pending)
6	8-7501	05-108-7501	Gas distributor, cutting - VESPEL ®
7	8-7503	05-108-7503	Tip, cutting 35A - ϕ 0,99 - .039
	8-7505	05-108-7505	Tip, cutting 60A - ϕ 1,32 - .052
8	8-7508	05-108-7508	Gas distributor, gouging - VESPEL ®
9	8-7506	05-108-7506	Tip, Gouging - ϕ 1,86 - .073
10	9-7501E	05-109-7501E	Coil spring (10 pcs.)
11	8-7500	05-108-7500	Shield cup
12	8-7575	05-108-7575	Double pointed spacer
13	8-7496	05-108-7496	Shield cup maximum life, complete
14	8-7498	05-108-7498	Shield cup body
15	8-7497	05-108-7497	Heat shield (copper)
16	8-7507	05-108-7507	Crown shield cup assembly
17	8-7499	05-108-7499	Crown cup shield (copper)
N/S	4-7611	05-104-7801	Air and power cable 25' (7.5 mts) - Hand torch
N/S	4-7612	05-104-7802	Air and power cable 50' (15.0 mts) - Hand torch

* CIRCLE CUTTING ATTACHMENT : See page # 31

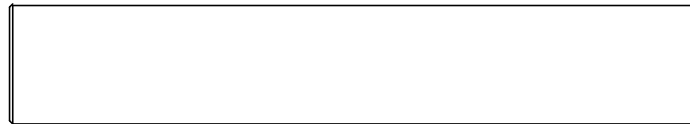
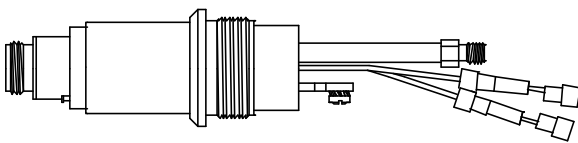
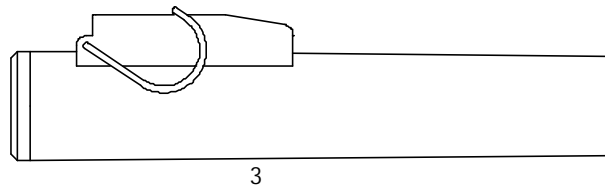
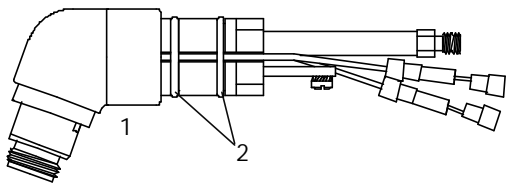
PCH/M-100XL Pak Master 100XL



Item	Ref.	Code	Description
N/S	2-0801	05-102-7801	Hand torch complete with 25' (7.5 mts) cable
N/S	2-0802	05-102-7802	Hand torch complete with 50' (15.0 mts) cable
N/S	2-0805	05-102-7805	Machine torch complete with 25' (7.5 mts) cable, (with handle item 6)
N/S	2-0806	05-102-7806	Machine torch complete with 50' (15.0 mts) cable, (with handle item 6)
1	8-7510	05-108-7510	70° Torch Head
2	8-0532	05-108-0532	O-Ring (Shield Cup), (20 pcs.)
3	8-0533	05-108-0533	O-Ring (Handle), (20 pcs.)
4	9-5636E	05-109-5636	Handgrip complete with microswitch (incl. 9-5636, 9-7502, 8-1322)
5	8-7512	05-108-7512	180° Torch Head
6	9-5637E	05-101-2001	Machine handle
7	8-4018	05-108-4018	Nut
8	9-5637	05-109-5637	Adaptor
9	8-5005	05-108-5005	Positioning tube
10	8-4204	05-108-4204	End Cap
11	8-7502	05-108-7502	Electrode, long life, (Pat. Pending)
12	8-7501	05-108-7501	Gas distributor, cutting - VESPEL ®
13	8-7503	05-108-7503	Tip, cutting 35A - ø 0,99 - .039
	8-7504	05-108-7504	Tip, cutting 55A - ø 1,17 - .046
	8-7505	05-108-7505	Tip, cutting 70A - ø 1,32 - .052
14	8-7508	05-108-7508	Gas distributor, gouging - VESPEL ®
15	8-7506	05-108-7506	Tip, Gouging - ø 1,86 - .073
16	9-7501E	05-109-7501E	Coil spring (10 pcs.)
17	8-7500	05-108-7500	Shield cup
18	8-7575	05-108-7575	Double pointed spacer
19	8-7496	05-108-7496	Shield cup maximum life, complete
20	8-7498	05-108-7498	Shield cup body
21	8-7497	05-108-7497	Heat shield (copper)
22	8-7507	05-108-7507	Crown shield cup assembly
23	8-7499	05-108-7499	Crown cup shield (copper)
N/S	4-0810	05-104-7801	Air and power cable 25' (7.5 mts) - Hand torch
N/S	4-0811	05-104-7802	Air and power cable 50' (15.0 mts) - Hand torch
N/S	4-0812	05-104-7803	Air and power cable 25' (7.5 mts) - Machine torch
N/S	4-0813	05-104-7804	Air and power cable 50' (15.0 mts) - Machine torch

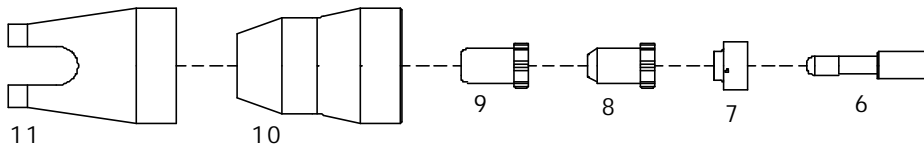
* CIRCLE CUTTING ATTACHMENT : See page # 31

PCH/M-40 Pak Master 50XL Plus



4

5



11

10

9

8

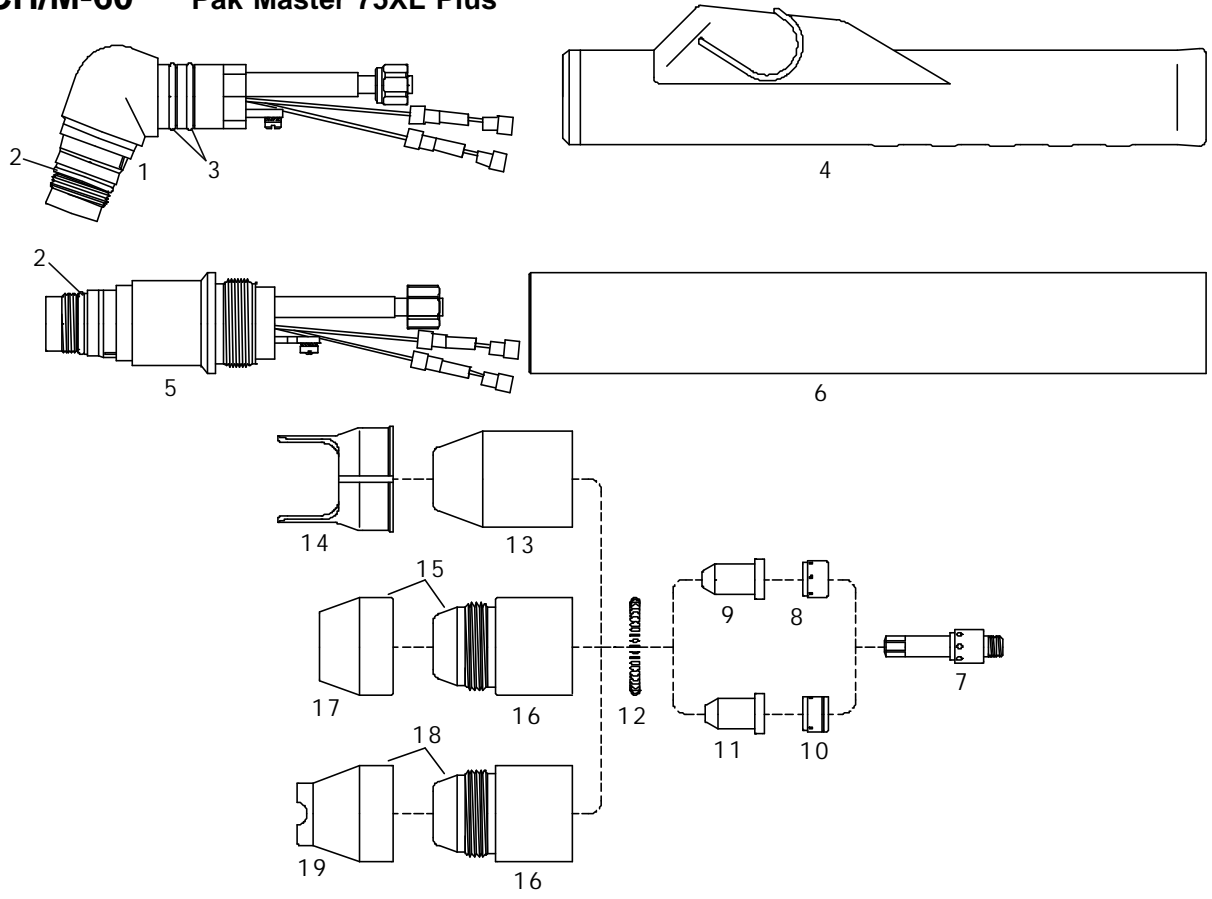
7

6

Item	Ref.	Code	Description
N/S	2-5035	05-102-5035	Hand torch complete with 25' (7.5 mts) cable
N/S	2-5036	05-102-5036	Hand torch complete with 50' (15.0 mts) cable
N/S	2-5039	05-102-5039	Machine torch complete with 25' (7.5 mts) cable
N/S	2-5040	05-102-5040	Machine torch complete with 50' (15.0 mts) cable
1	9-8055	05-109-8055	70° Torch head
2	8-0533	05-108-0533	O-Ring (20 pcs.)
3	9-8059	05-109-0019	Handgrip complete with microswitch
4	9-8053	05-109-8053	180° Torch head
5	9-7833	05-109-7833	Machine handle
6	9-6506	05-109-6506	Electrode - Hf (long life)
7	9-6507	05-109-6507	Gas Distributor - VESPEL ® (long life)
8	9-6501	05-109-6501	Tip - Drag (long life)
9	9-6500	05-109-6500	Tip - Standoff (long life)
	9-6502	05-109-6502	Tip - Gouging
10	9-6003	05-109-6503	Shield Cup - Std
11	9-6004	05-109-6004	Shield Cup - Crown (requires 05-109-6003)
N/S	4-0815	05-104-0815	Air and power cable 25' (7.5 mts) - Hand torch
N/S	4-0816	05-104-0816	Air and power cable 50' (15.0 mts)- Hand torch
N/S	4-2897	05-104-2897	Air and power cable 25' (7.5 mts) - Machine torch
N/S	4-2898	05-104-2898	Air and power cable 50' (15.0 mts)- Machine torch

* CIRCLE CUTTING ATTACHMENT : See page # 31

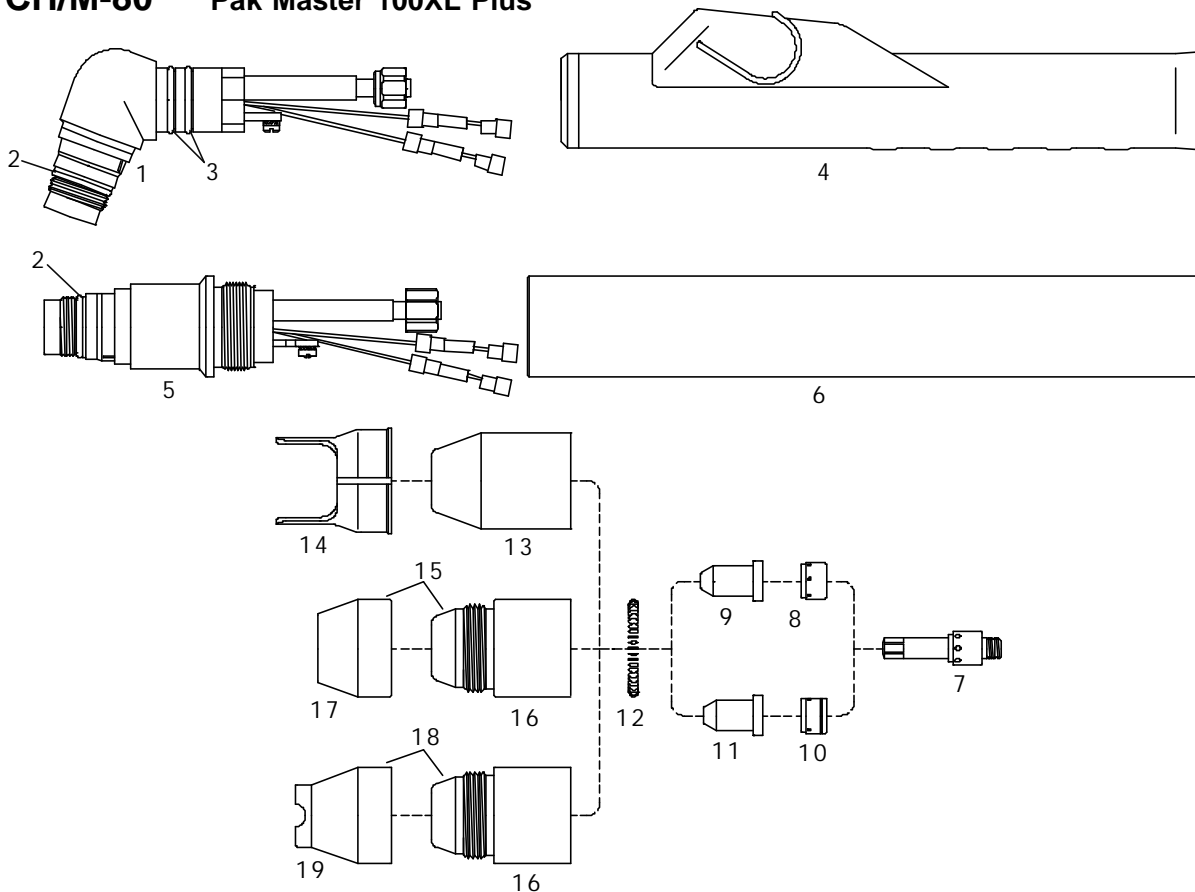
PCH/M-60 Pak Master 75XL Plus



Item	Ref.	Code	Description
N/S	2-6660	05-102-6660	Hand torch complete with 25' (7.5 mts) cable
N/S	2-6661	05-102-6661	Hand torch complete with 50' (15.0 mts) cable
N/S	2-6664	05-102-6664	Machine torch complete with 25' (7.5 mts) cable
N/S	2-6665	05-102-6665	Machine torch complete with 50' (15.0 mts) cable
1	9-8075	05-109-8075	70° Torch Head
2	8-0533	05-108-0533	O-Ring (Handle), (20 pcs.)
3	8-0532	05-108-0532	O-Ring (Shield Cup), (20 pcs.)
4	9-8066	05-109-5636	Handgrip complete with microswitch
5	9-8073	05-109-8073	180° Torch Head
6	9-7833	05-109-7833	Machine handle
7	8-7502	05-108-7502	Electrode, long life, (Pat. Pending)
8	8-7501	05-108-7501	Gas distributor, cutting - VESPEL ®
9	8-7503	05-108-7503	Tip, cutting 35A - ø 0,99 - .039
	9-7726	05-109-7726	Tip, cutting 60A - ø 1,24 - .049
10	8-7508	05-108-7508	Gas distributor, gouging - VESPEL ®
11	8-7506	05-108-7506	Tip, Gouging - ø 1,86 - .073
12	9-7501E	05-109-7501E	Coil spring (10 pcs.)
13	8-7500	05-108-7500	Shield cup
14	8-7575	05-108-7575	Double pointed spacer
15	8-7496	05-108-7496	Shield cup maximum life, complete
16	8-7498	05-108-7498	Shield cup body
17	8-7497	05-108-7497	Heat shield (copper)
18	8-7507	05-108-7507	Crown shield cup assembly
19	8-7499	05-108-7499	Crown cup shield (copper)
N/S	4-0819	05-104-7801	Air and power cable 25' (7.5 mts) - Hand torch
N/S	4-0820	05-104-7802	Air and power cable 50' (15.0 mts) - Hand torch
N/S	4-7502	05-104-7803	Air and power cable 25' (7.5 mts) - Machine torch
N/S	4-7503	05-104-7804	Air and power cable 50' (15.0 mts) - Machine torch

* CIRCLE CUTTING ATTACHMENT : See page # 31

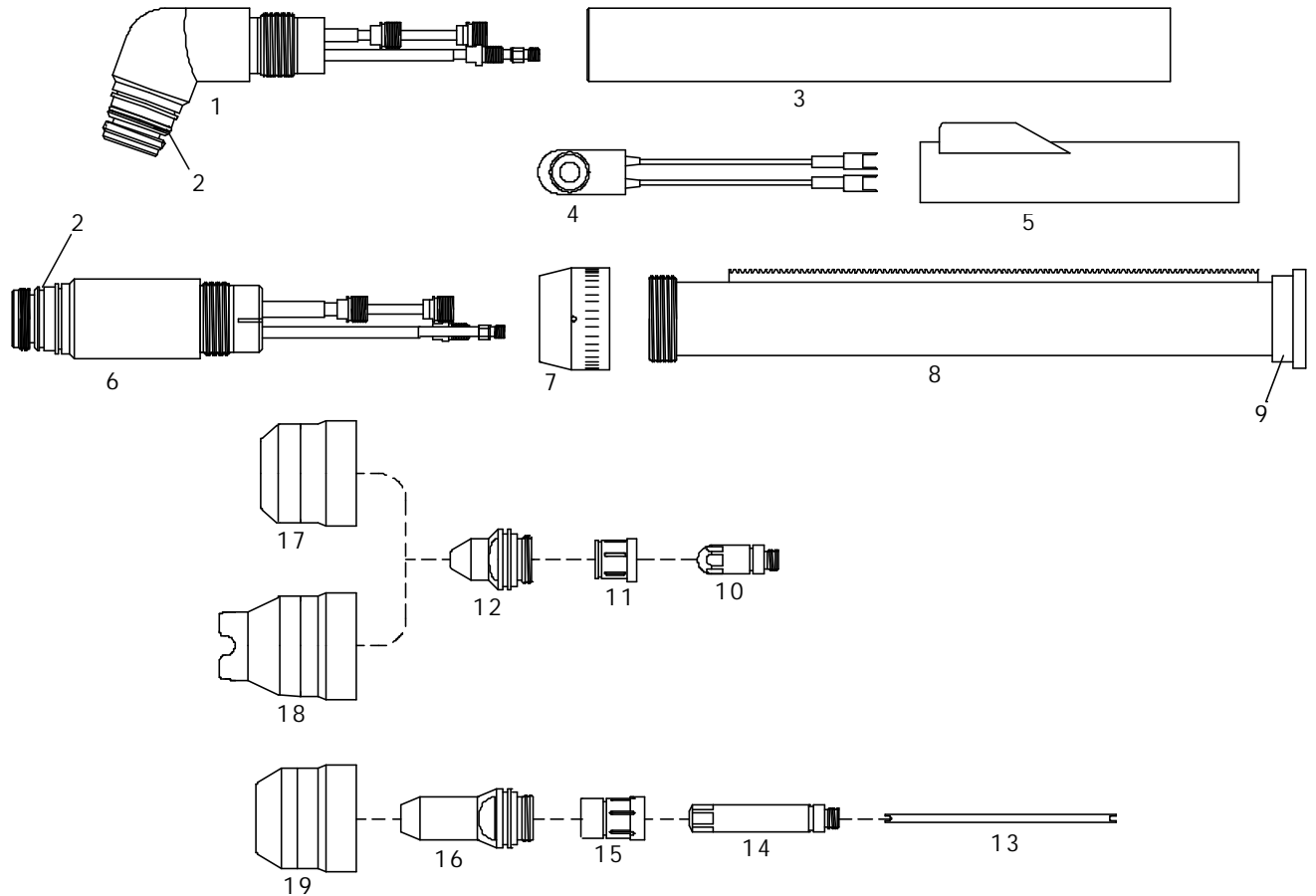
PCH/M-80 Pak Master 100XL Plus



Item	Ref.	Code	Description
N/S	2-0080	05-102-0080	Hand torch complete with 25' (7.5 mts) cable
N/S	2-0081	05-102-0081	Hand torch complete with 50' (15.0 mts) cable
N/S	2-0084	05-102-0084	Machine torch complete with 25' (7.5 mts) cable
N/S	2-0085	05-102-0085	Machine torch complete with 50' (15.0 mts) cable
1	9-8075	05-109-8075	70° Torch Head
2	8-0532	05-108-0532	O-Ring (Shield Cup), (20 pcs.)
3	8-0533	05-108-0533	O-Ring (Handle), (20 pcs.)
4	9-8066	05-109-5636	Handgrip complete with microswitch
5	9-8073	05-109-8073	180° Torch Head
6	9-7833	05-109-7833	Machine handle
7	8-7502	05-108-7502	Electrode, long life, (Pat. Pending)
8	8-7501	05-108-7501	Gas distributor, cutting - VESPEL ®
9	8-7503	05-108-7503	Tip, cutting 35A - ϕ 0,99 - .039
	8-7504	05-108-7504	Tip, cutting 55A - ϕ 1,17 - .046
	9-7728	05-109-7728	Tip, cutting 80A - ϕ 1,39 - .055
10	8-7508	05-108-7508	Gas distributor, gouging - VESPEL ®
11	8-7506	05-108-7506	Tip, Gouging - ϕ 1,86 - .073
12	9-7501E	05-109-7501E	Coil spring (10 pcs.)
13	8-7500	05-108-7500	Shield cup
14	8-7575	05-108-7575	Double pointed spacer
15	8-7496	05-108-7496	Shield cup maximum life, complete
16	8-7498	05-108-7498	Shield cup body
17	8-7497	05-108-7497	Heat shield (copper)
18	8-7507	05-108-7507	Crown shield cup assembly
19	8-7499	05-108-7499	Crown cup shield (copper)
N/S	4-0823	05-104-0823	Air and power cable 25' (7.5 mts) - Hand torch
N/S	4-0824	05-104-0824	Air and power cable 50' (15.0 mts) - Hand torch
N/S	4-0012	05-104-0012	Air and power cable 25' (7.5 mts) - Machine torch
N/S	4-0013	05-104-0013	Air and power cable 50' (15.0 mts) - Machine torch

* CIRCLE CUTTING ATTACHMENT : See page # 31

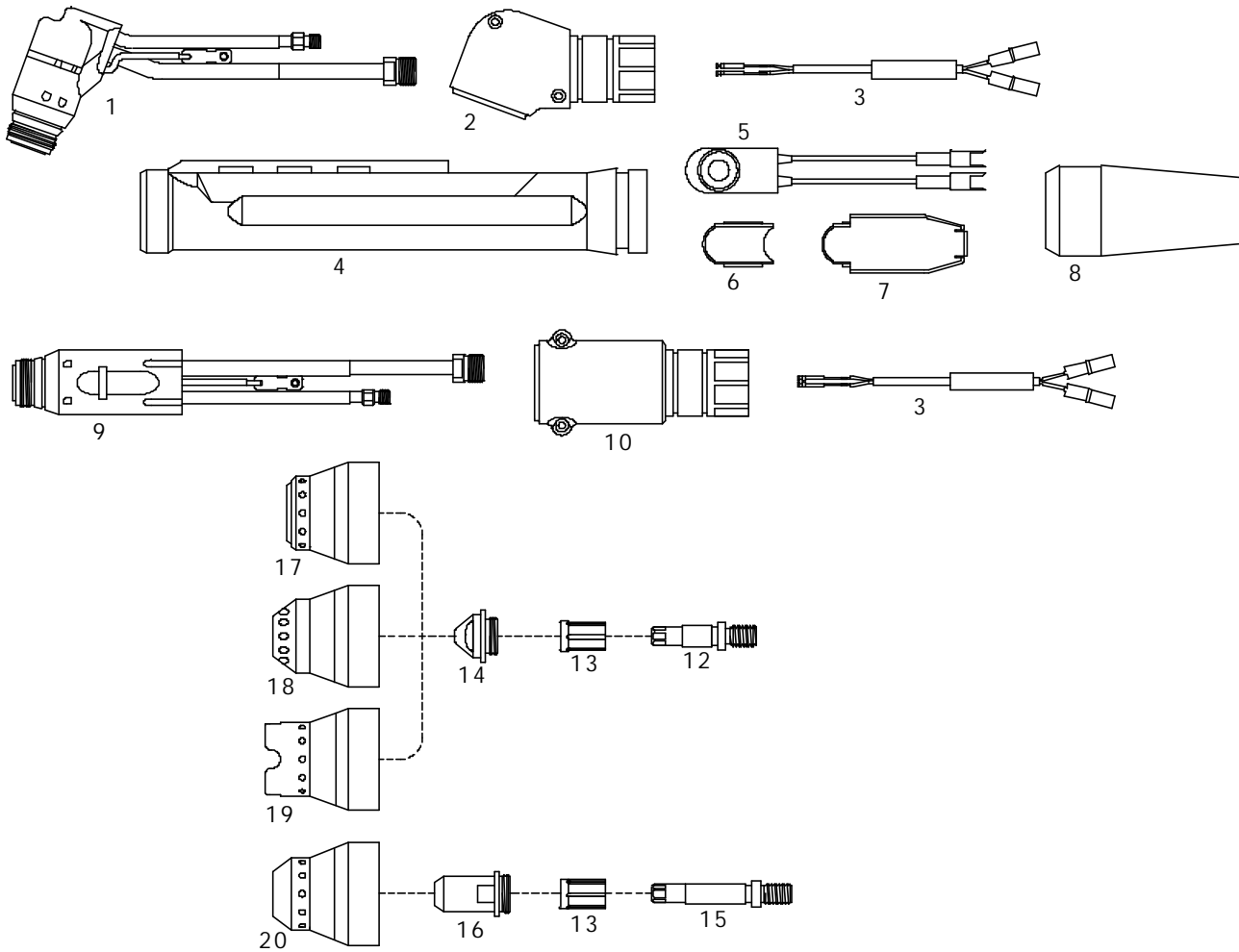
PCH/M-120 Pak Master 150XL



Item	Ref.	Code	Description
1	9-7830	05-109-7830	70° Torch Head
N/S	9-7831	05-109-7831	90° Torch Head
2	8-0538	05-108-0538	O-Ring (10 pcs.)
3	9-7833	05-109-7833	Handle
4	9-1246	05-109-1246	Switch
5	8-4216	05-108-4216	Switch Sheath
6	9-6410	05-109-6410	180° Torch Head
7	8-2158	05-108-2158	Adaptor
8	7-3207	05-107-3207	Positioning tube
9	8-4204	05-108-4204	End cap
10	20-1210	05-120-1210	Electrode Air - Cutting
	20-1211	05-120-1211	Electrode Multi Gas - Cutting
11	20-1215	05-120-1215	Gas Distributor - Cutting
12	20-1220	05-120-1220	Tip 35A
	20-1221	05-120-1221	Tip 70A
	20-1222	05-120-1222	Tip 120A
13	20-1402	05-120-1402	Coolant Tube extension - Gouging
14	20-1404	05-120-1404	Electrode Air/N2 - Gouging
	20-1405	05-120-1405	Electrode Ar/H2 - Gouging
15	20-1409	05-120-1409	Gas Distributor - Gouging
16	20-1412	05-120-1412	Tip .110 - Gouging
	20-1413	05-120-1413	Tip .125 - Gouging
	20-1414	05-120-1414	Tip .156 - Gouging
	20-1415	05-120-1415	Tip .171 - Gouging
17	20-1225	05-120-1225	Shield Cup - Std.
18	20-1226	05-120-1226	Shield Cup - Crown
19	20-1227	05-120-1227	Shield Cup - Gouging

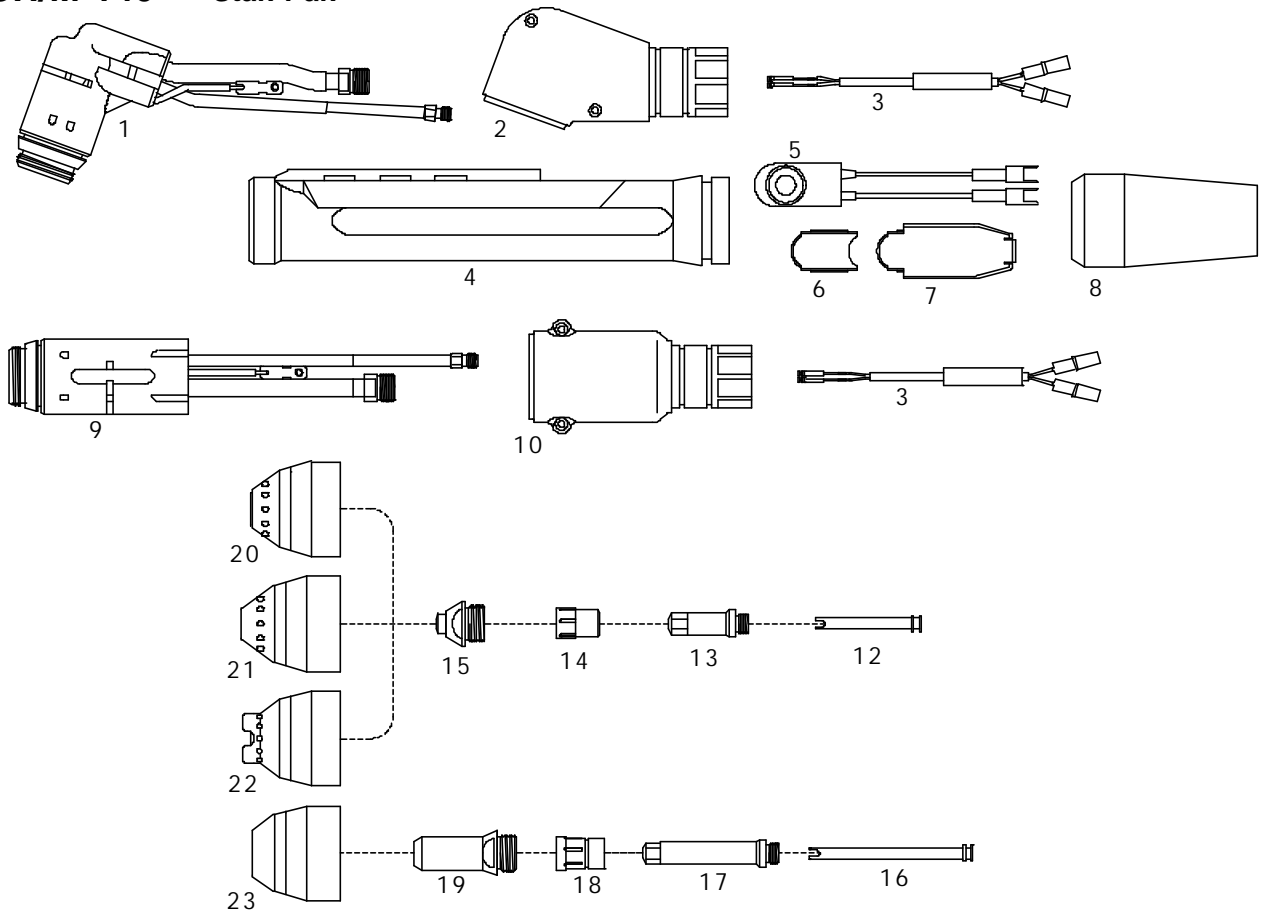
* CIRCLE CUTTING ATTACHMENT : See Page # 31

PCH/M-70 Stak Pak



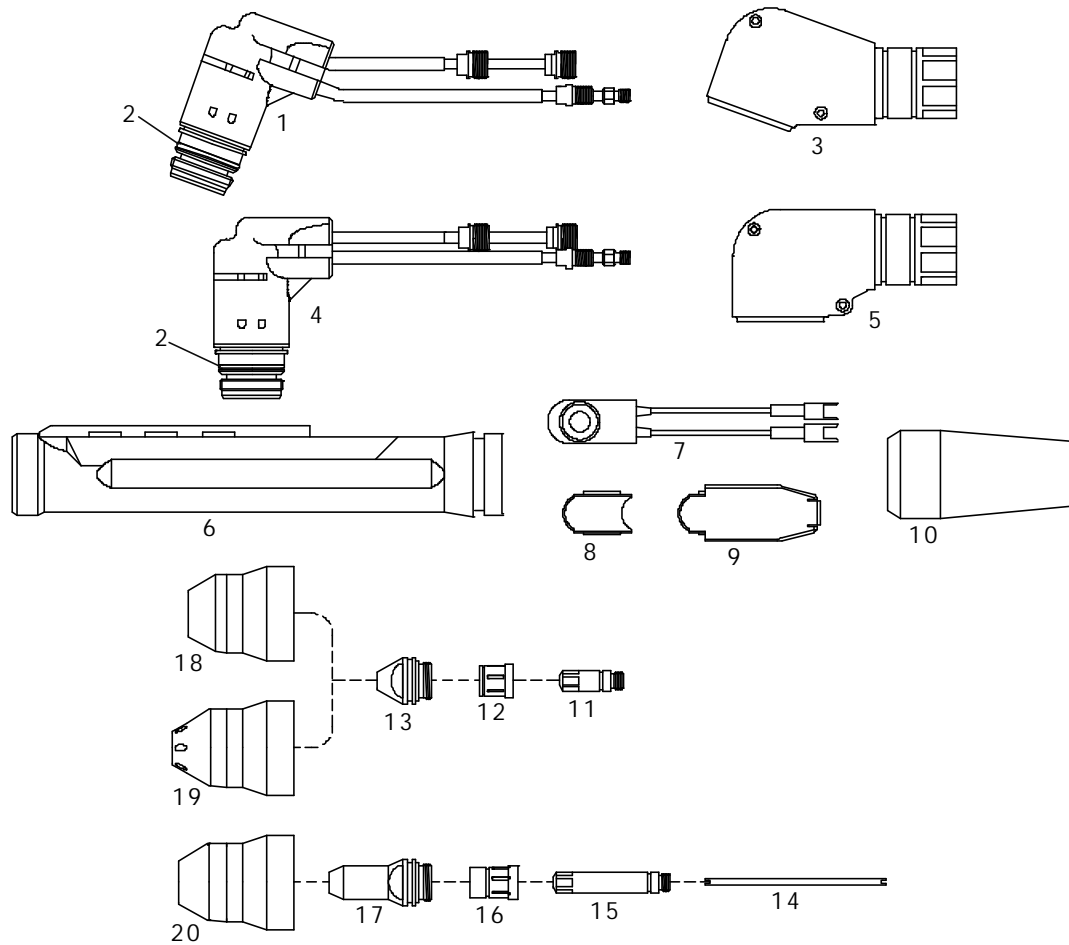
Item	Ref.	Code	Description
1	9-5810	05-109-5810	70° Torch Head
N/S	9-5859	05-109-5859	70° Torch Shell Complete
2	9-6266	05-109-6266	70° Torch Shell
N/S	9-5811	05-109-5811	90° Torch Head
N/S	9-5860	05-109-5860	90° Torch Shell Complete
N/S	9-6264	05-109-6264	90° Torch Shell
3	9-6162	05-109-6162	Pip wire assembly
4	8-4309	05-108-4309	Torch Handle
5	9-1246	05-109-1246	Switch
6	8-4302	05-108-4302	Insert
7	8-4303	05-108-4303	Closure
8	8-4308	05-108-4308	Boot
9	9-5812	05-109-5812	180° Torch Head
N/S	9-5861	05-109-5861	180° Torch Shell Complete
10	9-6265	05-109-6265	180° Torch Shell
12	9-6019	05-109-6019	Electrode - Cutting, Air/N2/O2
	9-6021	05-109-6021	Electrode - Cutting, Ar/H2
13	9-6022	05-109-6022	Gas Distributor
14	9-6008	05-109-6008	Tip - Cutting 35A Air/N2/O2
	9-6009	05-109-6009	Tip - Cutting 70A Air/N2/O2
	9-6013	05-109-6013	Tip - Cutting 70A Ar/H2
15	9-6107	05-109-6107	Electrode - Gouging, Air/N2/O2
	9-6108	05-109-6108	Electrode - Gouging, Ar/H2
16	9-6014	05-109-6014	Tip - Gouging .089
	9-6015	05-109-6015	Tip - Gouging .104
	9-6109	05-109-6109	Tip - Gouging .125
17	9-6016	05-109-6016	Shield Cup - Standoff - Std.
18	9-6024	05-109-6024	Shield Cup - Standoff - Long
19	9-6017	05-109-6017	Shield Cup - Crown
20	9-6018	05-109-6018	Shield Cup - Gouging

PCH/M-140 Stak Pak



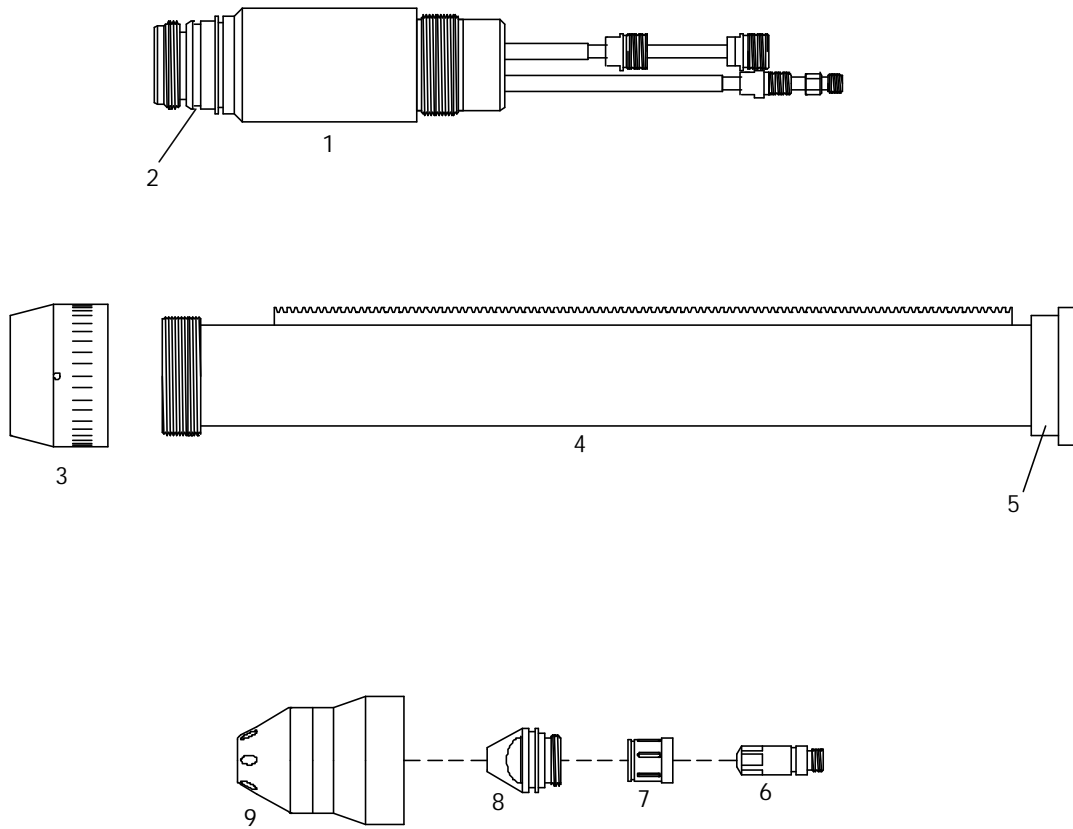
Item	Ref.	Code	Description
1	9-5813	05-109-5813	70° Torch Head
2	9-5826	05-109-5826	70° Torch Shell
N/S	9-5814	05-109-5814	90° Torch Head
N/S	9-5827	05-109-5827	90° Torch Shell
3	9-4532	05-109-4532	Pip Wire Assembly
4	8-4312	05-108-4312	Torch Handle
5	9-1246	05-109-1246	Switch
6	8-4302	05-108-4302	Insert
7	8-4303	05-108-4303	Closure
8	8-4311	05-108-4311	Boot
9	9-5815	05-109-5815	180° Torch Head
10	9-5828	05-109-5828	180° Torch Shell
12	9-6052	05-109-6052	Cooling Tube - Cutting
13	9-6048	05-109-6048	Electrode - Cutting, Air/N2/O2
	9-6050	05-109-6050	Electrode - Cutting, Ar/H2
14	9-6051	05-109-6051	Gas Distributor - Cutting
15	9-6025	05-109-6025	Tip - Cutting 35A Air/N2
	9-6026	05-109-6026	Tip - Cutting 70A Air/N2
	9-6027	05-109-6027	Tip - Cutting 105A Air/N2
	9-6028	05-109-6028	Tip - Cutting 140A Air/N2
	9-6034	05-109-6034	Tip - Cutting 70A Ar/H2
	9-6035	05-109-6035	Tip - Cutting 105A Ar/H2
	9-6036	05-109-6036	Tip - Cutting 140A Ar/H2
16	9-6113	05-109-6113	Cooling Tube - Gouging
17	9-6110	05-109-6110	Electrode - Gouging, Air/N2/O2
	9-6111	05-109-6111	Electrode - Gouging, Ar/H2
18	9-6112	05-109-6112	Gas Distributor - Gouging
19	9-6037	05-109-6037	Tip - Gouging .110
	9-6038	05-109-6038	Tip - Gouging .125
	9-6039	05-109-6039	Tip - Gouging .156
	9-6040	05-109-6040	Tip - Gouging .171
20	9-6045	05-109-6045	Shield Cup - Standoff - Std.
21	9-6054	05-109-6054	Shield Cup - Standoff - Long
22	9-6046	05-109-6046	Shield Cup - Crown
23	9-6047	05-109-6047	Shield Cup - Gouging

PCH-145 Stak Pak



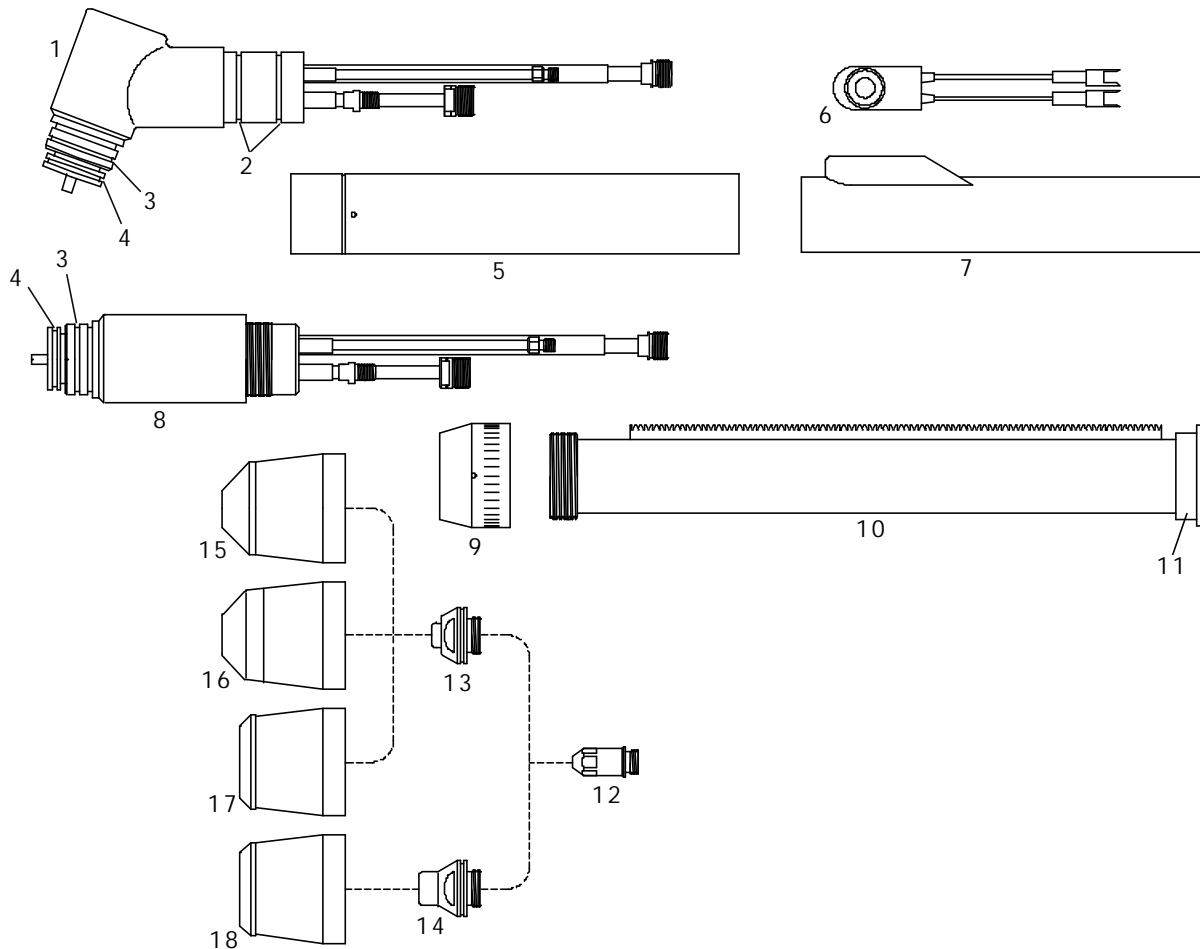
Item	Ref.	Code	Description
1	9-5816	05-109-5816	70° Torch Head
2	8-0538	05-108-0538	O-Ring (10 pcs.)
3	9-5829	05-109-5829	70° Torch Shell
4	9-5817	05-109-5817	90° Torch Head
5	9-5830	05-109-5830	90° Torch Shell
6	8-4312	05-108-4312	Torch Handle
7	9-1246	05-109-1246	Switch
8	8-4302	05-108-4302	Insert
9	8-4303	05-108-4303	Closure
10	8-4311	05-108-4311	Boot
11	9-6078	05-109-6078	Electrode - Cutting, Air
	9-6129	05-109-6129	Electrode - Cutting, N2
	9-6080	05-109-6080	Electrode - Cutting, Ar/H2
12	9-6081	05-109-6081	Gas Distributor - Cutting
13	9-6055	05-109-6055	Tip - Cutting 35A Air/N2
	9-6056	05-109-6056	Tip - Cutting 70A Air/N2
	9-6057	05-109-6057	Tip - Cutting 105A Air/N2
	9-6058	05-109-6058	Tip - Cutting 140A Air/N2
	9-6064	05-109-6064	Tip - Cutting 70A Ar/H2
	9-6065	05-109-6065	Tip - Cutting 105A Ar/H2
	9-6066	05-109-6066	Tip - Cutting 140A Ar/H2
14	20-1403	05-120-1403	Coolant Tube extension - Gouging
15	20-1404	05-120-1404	Electrode - Gouging, Air/N2/O2 (replaces 05-109-6130)
	20-1405	05-120-1405	Electrode - Gouging, Ar/H2 (replaces 05-109-6131)
16	20-1409	05-120-1409	Gas Distributor - Gouging (replaces 05-109-6082)
17	20-1415	05-120-1415	Tip - Gouging .171 (replaces 05-109-6067)
	20-1416	05-120-1416	Tip - Gouging .209 (replaces 05-109-6068)
	20-1417	05-120-1417	Tip - Gouging .246 (replaces 05-109-6069)
	20-1418	05-120-1418	Tip - Gouging .246 (replaces 05-109-6070)
18	9-6075	05-109-6075	Shield Cup - Standoff - Std.
19	9-6083	05-109-6083	Shield Cup - Standoff - Long
20	20-1424	05-120-1424	Shield Cup - Gouging - Hand (replaces 05-109-6077)

PCM-145 Stak Pak, TD750, Merlin 3000, Pak 15XC w/Max 300 retrofit



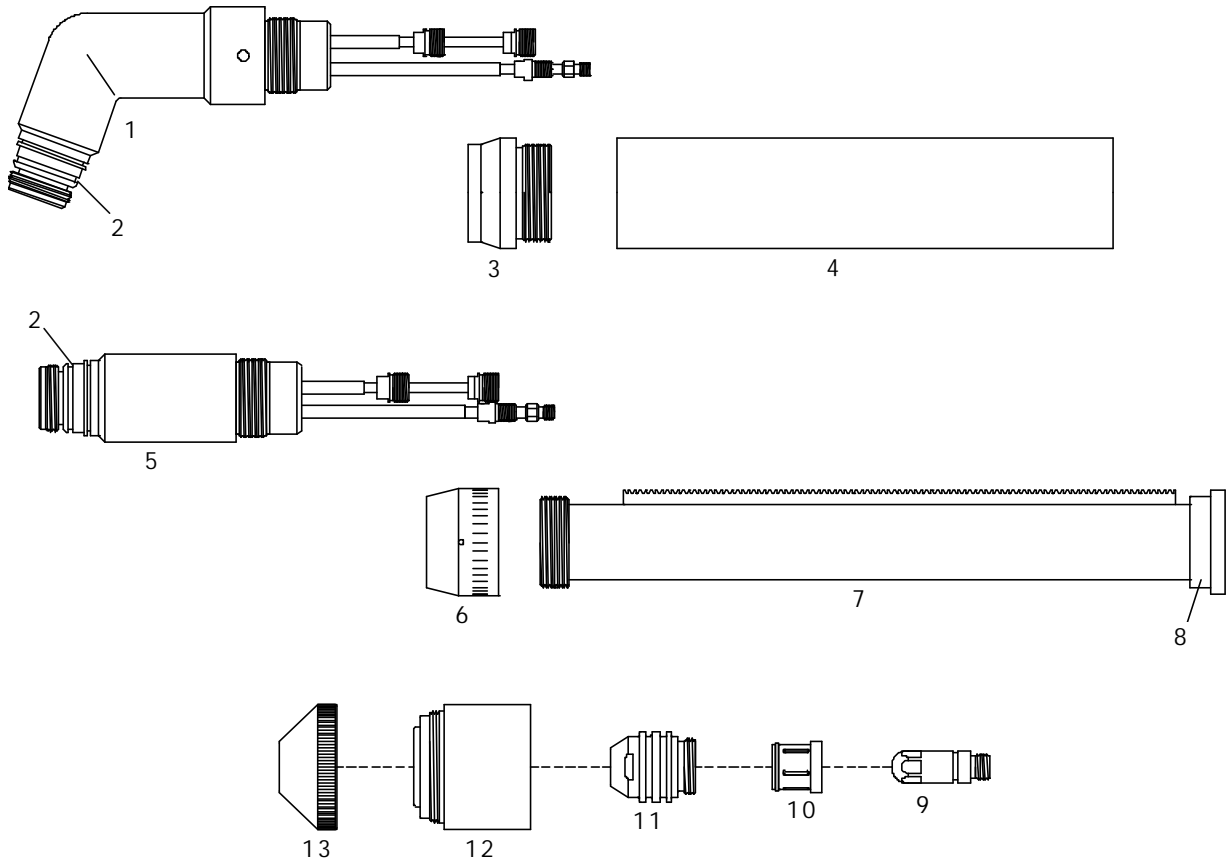
Item	Ref.	Code	Description
1	9-6410	05-109-6410	180° Torch Head
2	8-0538	05-108-0538	O-Ring (10 pcs.)
3	8-2158	05-108-2158	Adaptor
4	7-3207	05-107-3207	Positioning Tube
5	8-4204	05-108-4204	End Cap
6	20-1018	05-120-1018	Electrode Air/O2
	20-1023	05-120-1023	Electrode N2 (replaces 05-109-6431)
	20-1025	05-120-1025	Electrode Ar/H2 (replaces 05-109-6427)
7	9-6416	05-109-6416	Gas Distributor
8	9-6424	05-109-6424	Tip Cutting 70A Air/N2
	9-6425	05-109-6425	Tip Cutting 105A Air/N2
	9-6426	05-109-6426	Tip Cutting 140A Air/N2
	9-6419	05-109-6419	Tip Cutting 70A O2
	9-6420	05-109-6420	Tip Cutting 105A O2
	9-6421	05-109-6421	Tip Cutting 140A O2
	9-6428	05-109-6428	Tip Cutting 70A Ar/H2
	9-6429	05-109-6429	Tip Cutting 105A Ar/H2
	9-6430	05-109-6430	Tip Cutting 140A Ar/H2
9	9-6411	05-109-6411	Shield Cup - Standoff - Long O2
	9-6412	05-109-6412	Shield Cup - Standoff - Long Air/N2 Ar/H2

PCH/M-150 Pak 15XC



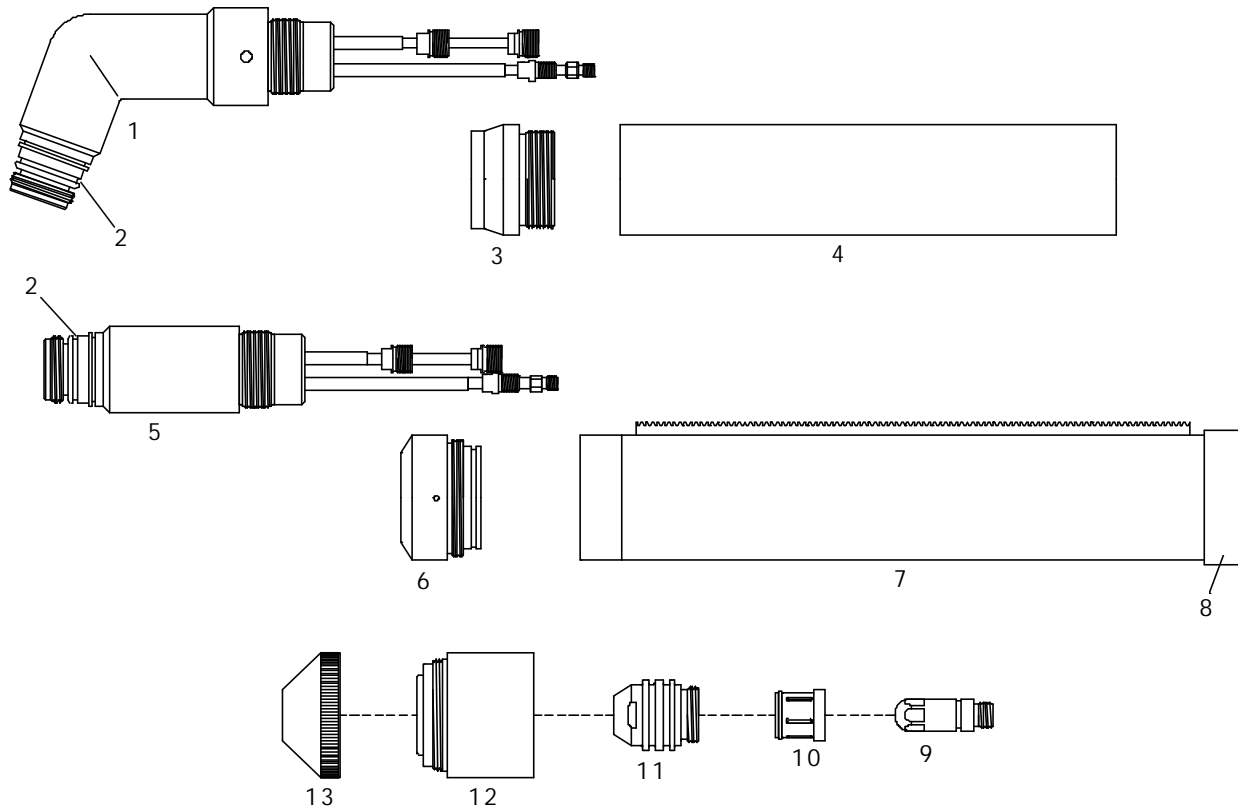
Item	Ref.	Code	Description
1	9-5743	05-109-5743	70° Torch Head
N/S	9-5744	05-109-5744	90° Torch Head
2	8-5570	05-108-5570	O-Ring (Handle), (10 pcs.)
3	8-0540	05-108-0540	O-Ring (Shield Cup, Lg.), (10 pcs.)
4	8-0537	05-108-0537	O-Ring (Shield Cup, Sm.), (10 pcs.)
5	9-1063	05-109-1063	Handle
6	9-1246	05-109-1246	Switch
7	9-1064	05-109-1064	Switch Sheath
8	9-5745	05-109-5745	180° Torch Head
9	8-2158	05-108-2158	Adaptor
10	7-3207	05-107-3207	Positioning Tube
11	8-4204	05-108-4204	End Cap
12	9-5749	05-109-5749	Electrode - Air
	9-5760	05-109-5760	Electrode - O2
	9-5754	05-109-5754	Electrode - N2, Ar - H2
13	9-5748	05-109-5748	Tip ϕ 1,09 - .043 - 50A Air
	9-5747	05-109-5747	Tip ϕ 1,40 - .055 - 100A Air
	9-5746	05-109-5746	Tip ϕ 1,78 - .070 - 150A Air
	9-5753	05-109-5753	Tip 50A O2
	9-5752	05-109-5752	Tip 100A O2
	9-5751	05-109-5751	Tip 150A O2
	9-5765	05-109-5765	Tip 50A N2
	9-5766	05-109-5766	Tip 100A N2
	9-5767	05-109-5767	Tip 150A N2
	9-5775	05-109-5775	Tip 150A Ar/H2
14	9-5756	05-109-5756	Tip - Gouging 85A .078
	9-5755	05-109-5755	Tip - Gouging 150A .120
15	9-5750	05-109-5750	Shield Cup - Ceramic Front
16	9-5790	05-109-5790	Shield Cup - Std. - Metal Front
17	9-5801	05-109-5801	Shield Cup - Copper (Tip Exp.)
	9-5758	05-109-5758	Shield Cup - Ceramic (Tip Exp.)
18	9-5774	05-109-5774	Shield Cup - Gouging

Maximizer 300 Merlin 1000



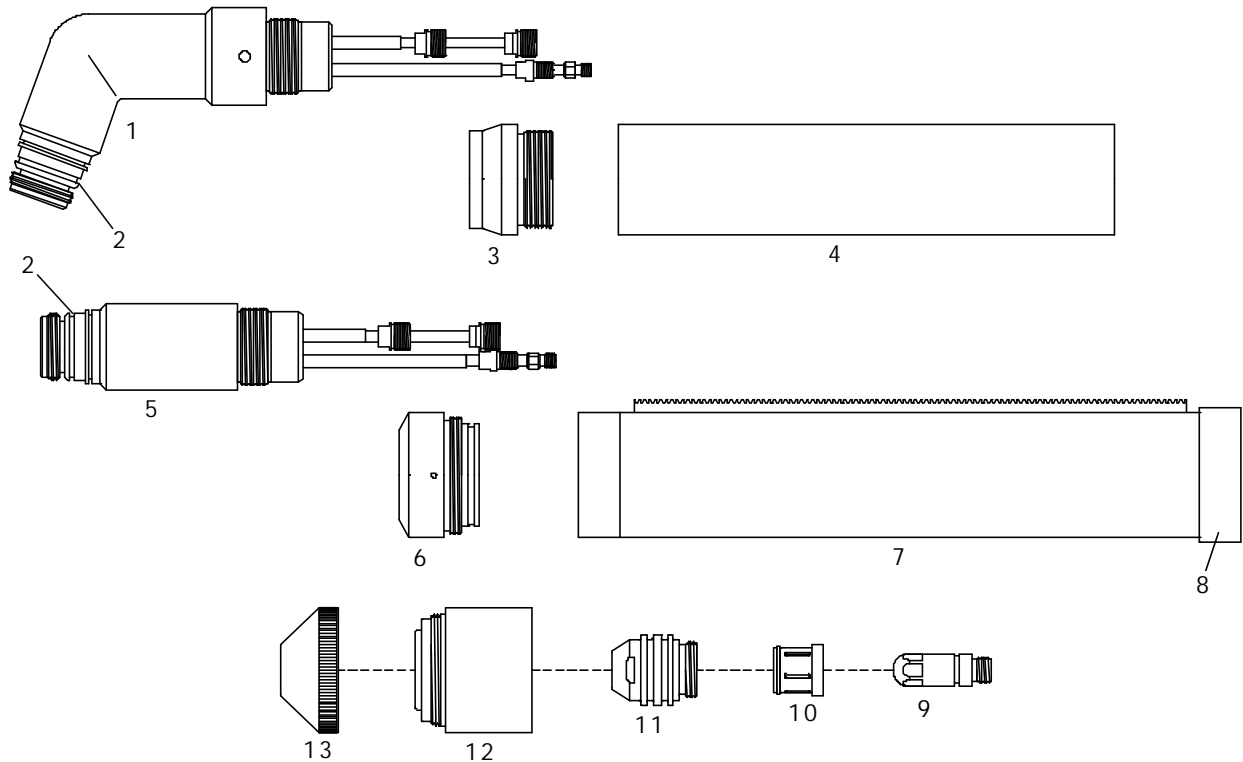
Item	Ref.	Code	Description
1	9-6457	05-109-6457	70° Torch Head
N/S	9-6459	05-109-6459	90° Torch Head
2	8-0538	05-108-0538	O-Ring (10 pcs.)
3	9-6767	05-109-6767	Adaptor
4	9-6769	05-109-6769	Mounting Tube
5	9-6410	05-109-6410	180° Torch Head
6	8-2158	05-108-2158	Adaptor
7	7-3207	05-107-3207	Positioning Tube
8	8-4204	05-108-4204	End Cap
9	20-1016	05-120-1016	Electrode O2
	20-1018	05-120-1018	Electrode Air
	20-1023	05-120-1023	Electrode N2
	20-1025	05-120-1025	Electrode Ar/H2
10	20-0008	05-120-0008	Gas Distributor 50-225A
11	20-1030	05-120-1030	Tip 50A O2/N2/Air
	20-1031	05-120-1031	Tip 100A O2/N2/Air
	20-1034	05-120-1034	Tip 300A
12	20-1002	05-120-1002	Shield Cup Body
	20-1029	05-120-1029	Shield Cup Body, Underwater
13	20-1003	05-120-1003	End Cup 50A
	20-1004	05-120-1004	End Cup 100A
	20-1028	05-120-1028	End Cup, Underwater
SQUARE CUT, 50A, O₂-O₂ CONSUMABLES			
9	20-1050	05-120-1050	Electrode Cutting O2
10	20-0008	05-120-0008	Gas Distributor, Cutting
11	20-1051	05-120-1051	Tip Cutting 50A
12	20-1002	05-120-1002	Shield Cup Body
13	20-1052	05-120-1052	Shield Cup End Cup, 50A

Maximizer 300 Merlin 3000, Merlin 6000

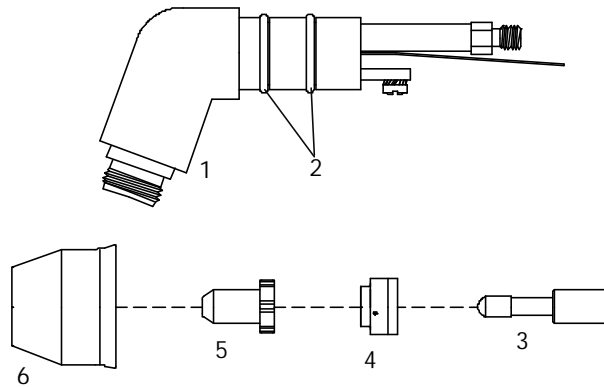


Item	Ref.	Code	Description
1	9-6457	05-109-6457	70° Torch Head
N/S	9-6459	05-109-6459	90° Torch Head
2	8-0538	05-108-0538	O-Ring (10 pcs.)
3	9-6767	05-109-6767	Adaptor
4	9-6769	05-109-6769	Mounting Tube
5	9-6410	05-109-6410	180° Torch Head
6	8-3322	05-108-3322	Adaptor
7	9-6819	05-109-6819	Positioning Tube
8	8-6522	05-108-6522	End Cap
9	20-1010	05-120-1010	Electrode O2 100-225A
	20-1015	05-120-1015	Electrode O2 100A
	20-1016	05-120-1016	Electrode O2 150A
	20-1017	05-120-1017	Electrode O2 225A
	20-1018	05-120-1018	Electrode Air 50-225A
	20-1021	05-120-1021	Electrode Air/O2 300A
	20-1023	05-120-1023	Electrode N2 50-300A
	20-1025	05-120-1025	Electrode Ar/H2 100-300A
	20-1050	05-120-1050	Electrode - Cutting O2
10	20-0008	05-120-0008	Gas Distributor 50-225A
	20-1009	05-120-1009	Gas Distributor 300A
11	20-1030	05-120-1030	Tip 50A
	20-1031	05-120-1031	Tip 100A
	20-1032	05-120-1032	Tip 150A
	20-1033	05-120-1033	Tip 225A
	20-1034	05-120-1034	Tip 300A
12	20-1002	05-120-1002	Shield Cup Body
	20-1029	05-120-1029	Shield Cup Body, Underwater (Merlin 6000 only)
13	20-1003	05-120-1003	End Cup 50A
	20-1004	05-120-1004	End Cup 100-225A
	20-1005	05-120-1005	End Cup 300A
	20-1006	05-120-1006	End Cup, Underwater, 100-300A
	20-1007	05-120-1007	End Cup, Non-Conductive
	20-1028	05-120-1028	End Cup, Underwater (Merlin 6000 only)

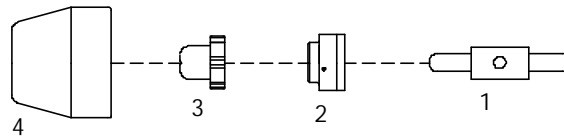
Maximizer 300 Merlin 6000 GST



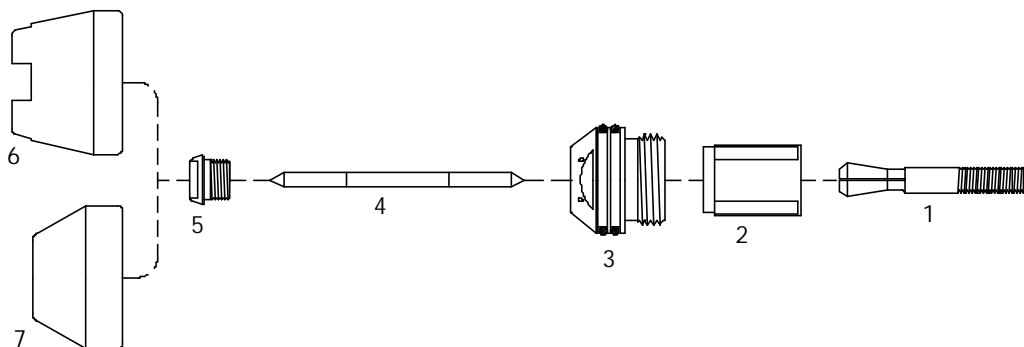
Item	Ref.	Code	Description
1	9-6457	05-109-6457	70° Torch Head
N/S	9-6459	05-109-6459	90° Torch Head
2	8-0538	05-108-0538	O-Ring (10 pcs.)
3	9-6767	05-109-6767	Adaptor
4	9-6769	05-109-6769	Mounting Tube
5	9-6410	05-109-6410	180° Torch Head
6	8-3322	05-108-3322	Adaptor
7	9-6819	05-109-6819	Positioning Tube
8	8-6522	05-108-6522	End Cap
9	20-1010	05-120-1010	Electrode O2 100-225A
	20-1018	05-120-1018	Electrode Air 50-225A
	20-1021	05-120-1021	Electrode Air/O2 300A
	20-1023	05-120-1023	Electrode N2 50-300A
	20-1025	05-120-1025	Electrode Ar/H2 100-300A
10	20-0008	05-120-0008	Gas Distributor 50-225A
	20-1009	05-120-1009	Gas Distributor 300A
11	20-1030	05-120-1030	Tip 50A
	20-1031	05-120-1031	Tip 100A
	20-1032	05-120-1032	Tip 150A
	20-1033	05-120-1033	Tip 225A
	20-1034	05-120-1034	Tip 300A
12	20-1002	05-120-1002	Shield Cup Body
	20-1029	05-120-1029	Shield Cup Body, Underwater
13	20-1003	05-120-1003	End Cup 50A
	20-1004	05-120-1004	End Cup 100-225A
	20-1005	05-120-1005	End Cup 300A
	20-1006	05-120-1006	End Cup, Underwater, 100-300A
	20-1007	05-120-1007	End Cup, Non-Conductive
	20-1028	05-120-1028	End Cup, Underwater
SQUARE CUT, 50A, O₂-O₂ CONSUMABLES			
9	20-1050	05-120-1050	Electrode Cutting O2
10	20-0008	05-120-0008	Gas Distributor, Cutting
11	20-1051	05-120-1051	Tip Cutting 50A
12	20-1002	05-120-1002	Shield Cup Body
13	20-1052	05-120-1052	Shield Cup End Cup, 50A

PCH-20 Dynapak 110, Pak 2XT

Item	Ref.	Code	Description
1	8-3220	05-108-3220	70° Torch Head
2	8-0533	05-108-0533	O-Ring (20 pcs.)
3	9-6006	05-109-6006	Electrode
4	8-3233	05-108-3233	Gas Distributor
5	8-3218	05-108-3218	Tip
6	8-3214	05-108-3214	Shield Cup Std.

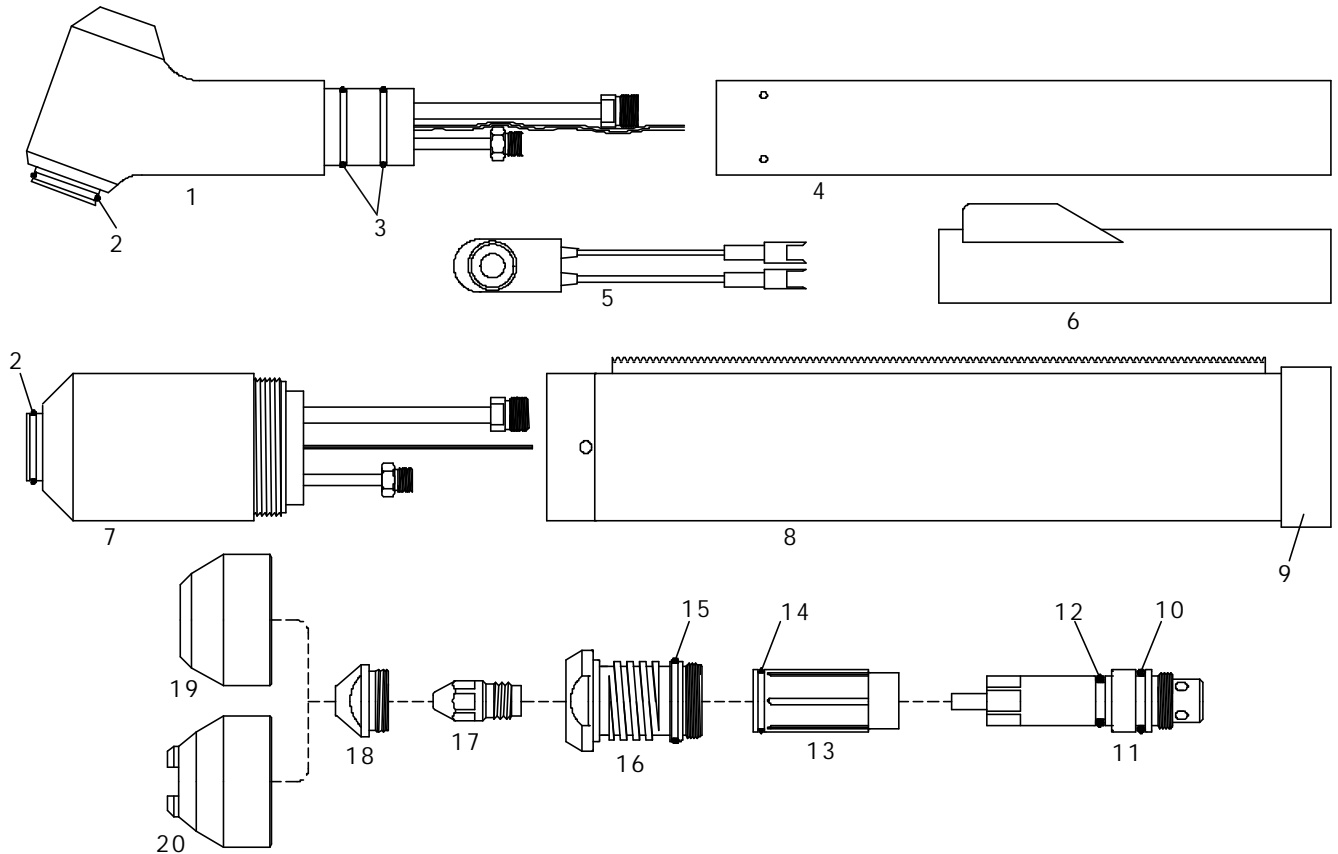
PCH-30 Pak-3

Item	Ref.	Code	Description
1	9-5503	05-109-5503	Electrode
2	8-3233	05-108-3233	Gas Distributor
3	9-5501	05-109-5501	Tip
4	9-5500	05-109-5500	Shield Cup Std.

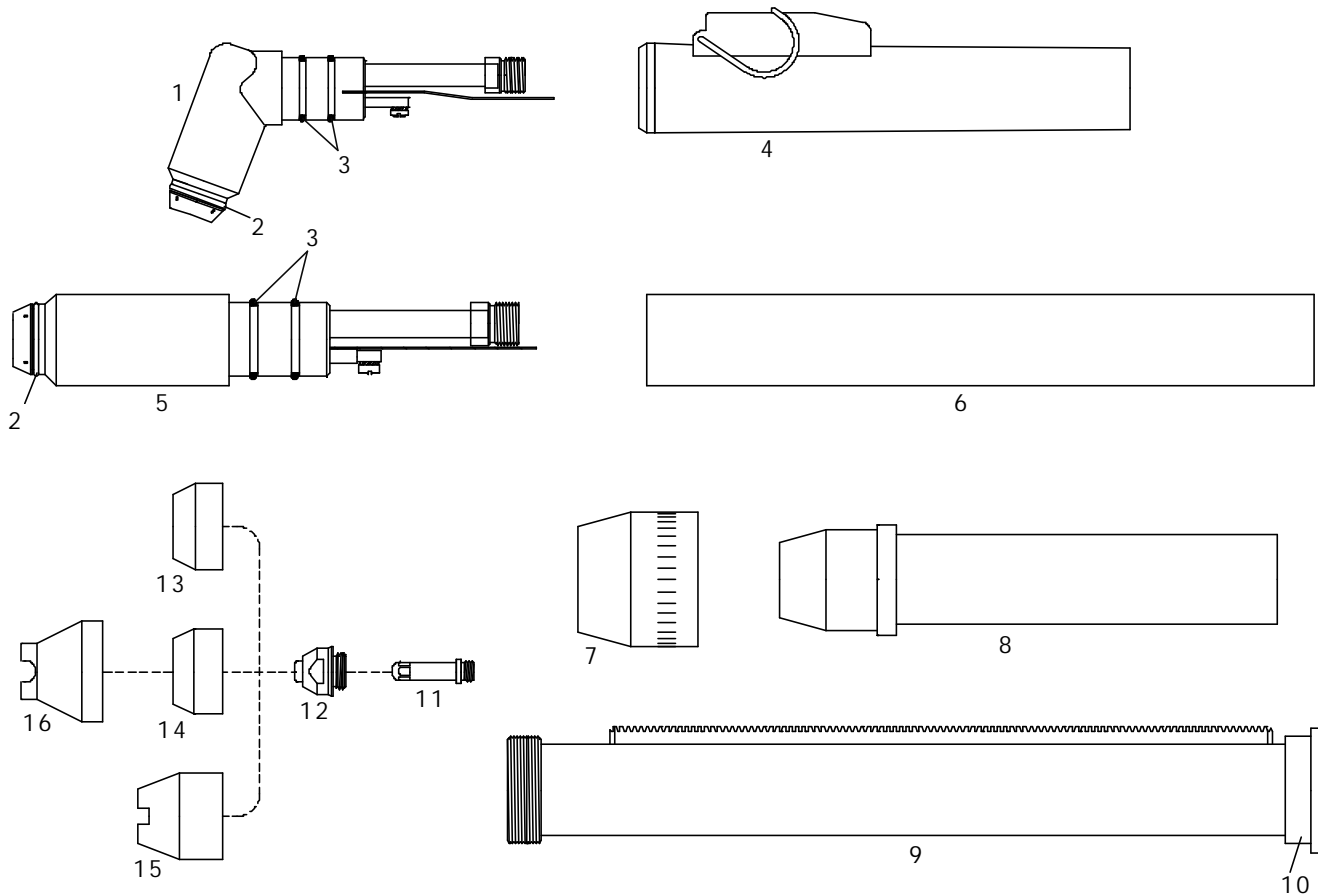
PCH-50 Pak-5

Item	Ref.	Code	Description
1	8-5506	05-108-5506	Collet
2	8-5510	05-108-5510	Sleeve
3	8-5520	05-108-5520	Liner (includes O-Rings)
4	8-5508	05-108-5508	Electrode
5	8-5507	05-108-5507	Tip
6	8-5519	05-108-5519	Shield Cup Crown Ceramic
7	8-5505	05-108-5505	Shield Cup Std. Ceramic

PCH/M-100 Pak 10XR



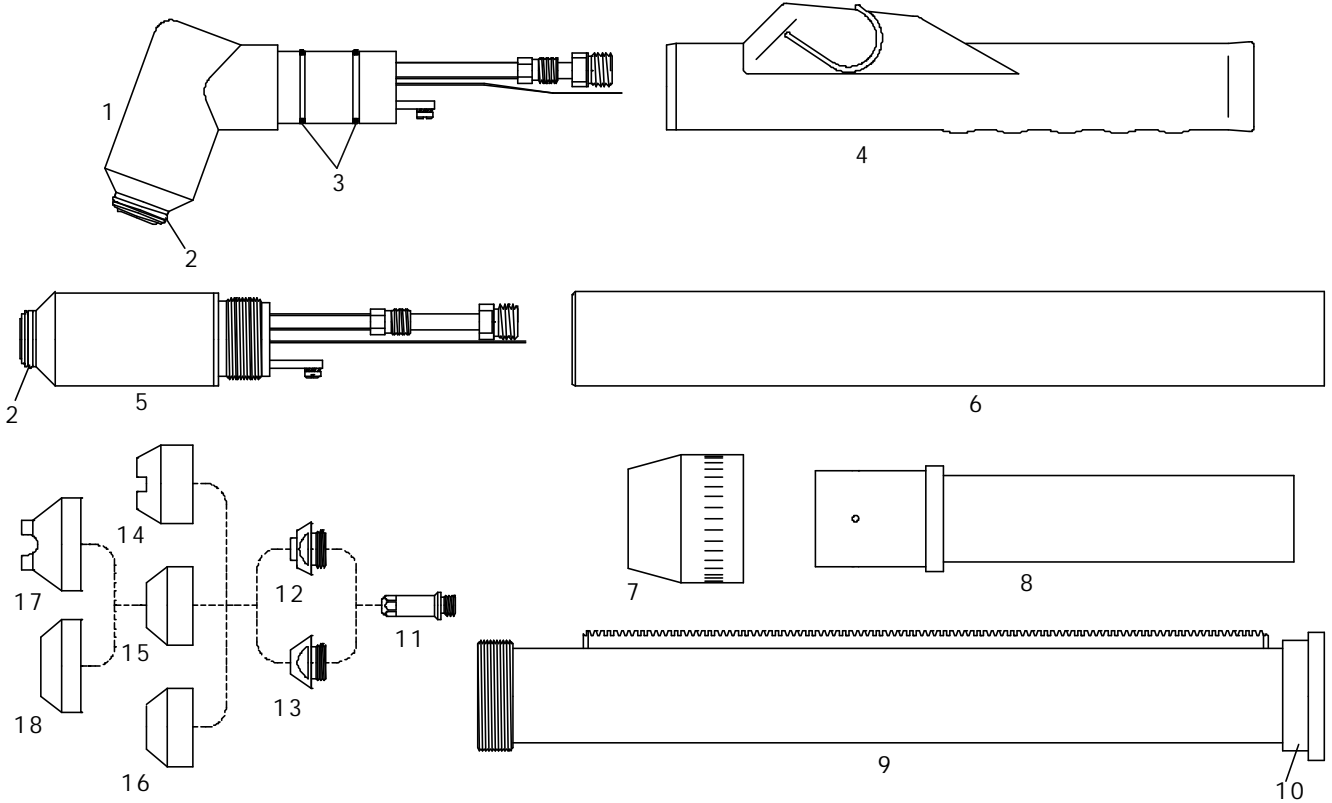
Item	Ref.	Code	Description
N/S	2-2894	05-102-2894	Hand torch complete with 25' (7.5 mts) cable
N/S	2-2895	05-102-2895	Hand torch complete with 50' (15.0 mts) cable
N/S	2-2896	05-102-2896	Machine torch complete with 25' (7.5 mts) cable and Pinion Assembly
N/S	2-2897	05-102-2897	Machine torch complete with 50' (15.0 mts) cable and Pinion Assembly
1	8-1113	05-108-1113	70° Torch Head
N/S	2-2893	05-102-2893	70° Torch Head with Parts
2	8-0556	05-108-0556	O-Ring (Shield Cup), (10 pcs.)
3	8-0538	05-108-0538	O-Ring (Handle), (10 pcs.)
4	8-1114	05-108-1114	Handle
5	9-5522	05-109-5522	Switch
6	8-4217	05-108-4217	Switch Sheath
7	8-1112	05-108-1112	180° Torch Head
N/S	2-2892	05-102-2892	180° Torch Head with Parts
8	8-6521	05-108-6521	Positioning Tube
9	8-6522	05-108-6522	End Cap
10	8-1152	05-001731-01	O-Ring, Electrode Holder, Large (10 pcs.)
11	8-1108	05-108-1108	Electrode Holder, w/O-Rings
12	8-1133	05-108-1133	O-Ring, Electrode Holder, Small (10 pcs.)
13	9-4339	05-109-4339	Gas Distributor, w/O-Ring
14	8-1134	05-108-1134	O-Ring, Gas Distributor (10 pcs.)
15	8-1135	05-108-1135	O-Ring, Liner (10 pcs.)
16	8-1106	05-108-1106	Liner, w/O-Ring
17	9-4340	05-109-4340	Electrode
18	9-4343	05-109-4343	Tip ϕ 0.99 - .039 - 35A
	9-4342	05-109-4342	Tip ϕ 1,32 - .052 - 70A
	9-4341	05-109-4341	Tip ϕ 1,50 - .059 - 105A
19	8-1100	05-108-1100	Shield Cup - Std.
	9-4345	05-109-4345	Shield Cup - Machine
20	8-1101	05-108-1101	Shield Cup - Crown
N/S	4-2852	05-104-2852	Air and power cable 25' (7.5 mts) - Hand torch
N/S	4-2853	05-104-2853	Air and power cable 50' (15.0 mts) - Hand torch
N/S	4-2854	05-104-2854	Air and power cable 25' (7.5 mts) - Machine torch
N/S	4-2855	05-104-2855	Air and power cable 50' (15.0 mts) - Machine torch

PCH/M-51 4Xi, 6Xi, Pak-3XR, Pak-6XR, Pak-7XR, Pak-5XT, Pak-625XR, Pak-750XR


Item	Ref.	Code	Description
N/S	2-2860	05-102-2860	Hand torch complete with 25' (7.5 mts) cable
N/S	2-2861	05-102-2861	Hand torch complete with 50' (15.0 mts) cable
N/S	2-2864	05-102-2864	Machine torch complete with 25' (7.5 mts) cable, (with handle item 6)
N/S	2-2865	05-102-2865	Machine torch complete with 50' (15.0 mts) cable, (with handle item 6)
1	9-5635	05-109-5635	70° Torch Head
2	8-5525	05-001771-01	O-Ring (Shield Cup), (20 pcs.)
3	8-0533	05-108-0533	O-Ring (Handle), (20 pcs.)
4	9-5636E	05-109-0019	Handgrip complete with microswitch (incl. 9-5636, 9-5522, 8-1322)
5	9-5634	05-109-5634	180° Torch Head
6	9-5637E	05-101-2001	Machine handle
7	8-4018	05-108-4018	Nut
8	9-5637	05-109-5637	Adaptor
9	8-5005	05-108-5005	Positioning tube
10	8-4204	05-108-4204	End cap
11	9-5633	05-109-5633	Electrode, long life, (Pat. Pending)
12	9-5718	05-109-5718	Tip 10-40A - Ø 0,96 - .038
	9-5631	05-109-5631	Tip 10-60A - Ø 1,10 - .043
	8-3321	05-108-3321	Tip 65A - Ø 1,20 - .047
	9-5724	05-109-5724	Tip Gouging - Ø 2,00 - .078
13	9-5630	05-109-5630	Shield Cup Ceramic
14	8-2159	05-108-2159	Shield Cup-Phenolic-Std.
15	8-5526	05-108-5526	Shield Cup-Crown-Ceramic
13	9-5779	05-109-5779	Shield Cup-Crown
N/S	4-5030	05-104-5030	Air and power cable 25' (7.5 mts) - Hand torch
N/S	4-5031	05-104-5031	Air and power cable 50' (15.0 mts) - Hand torch
N/S	4-5032	05-104-5032	Air and power cable 25' (7.5 mts) - Machine torch
N/S	4-5033	05-104-5033	Air and power cable 50' (15.0 mts) - Machine torch

* CIRCLE CUTTING ATTACHMENT : See page # 31

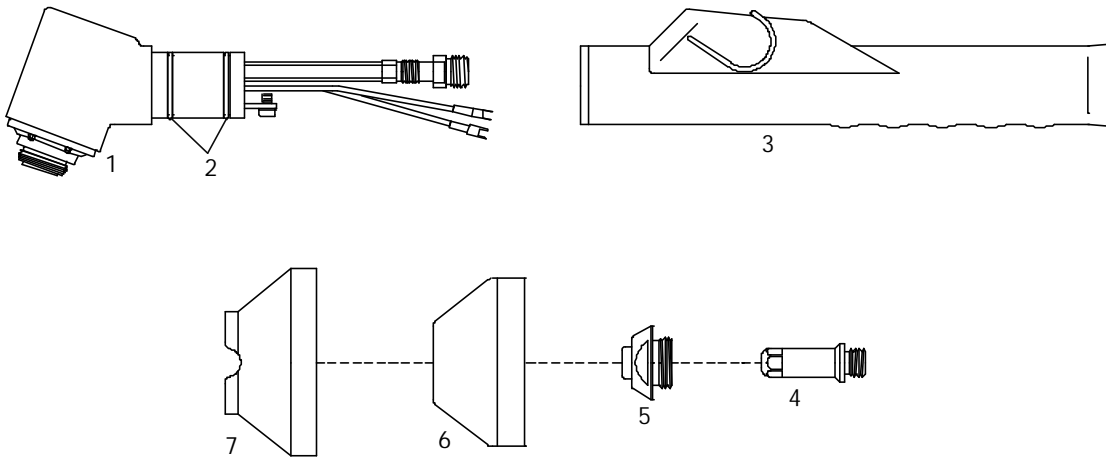
**PCH/M-52 Pak-5XR*, Pak-6XR*, Pak-7XR, Pak-8XR, Pak-10XR, Pak-625XR*, Pak-750XR*
Pak-1000XR, Pak-1250XR** * = Dual Gas



Item	Ref.	Code	Description
N/S	2-2936	05-102-2936	Hand torch complete with 25' (7.5 mts) cable
N/S	2-2937	05-102-2937	Hand torch complete with 50' (15.0 mts) cable
N/S	2-2938	05-102-2938	Machine torch complete with 25' (7.5 mts) cable, (with handle item 6)
N/S	2-2939	05-102-2939	Machine torch complete with 50' (15.0 mts) cable, (with handle item 6)
1	9-5642	05-109-5642	70° Torch Head
2	8-5525	05-001771-01	O-Ring (Shield Cup), (20 pcs.)
3	8-0536	05-108-0536	O-Ring (Handle), (20 pcs.)
4	9-5644E	05-109-5644E	Handgrip complete with microswitch (incl. 9-5644, 9-5522, 8-4216)
5	9-5643	05-109-5643	180° Torch Head
6	9-7833	05-109-7833	Machine handle
7	8-4018	05-108-4018	Nut
8	9-1901	05-109-1901	Adaptor
9	8-5005	05-108-5005	Positioning tube
10	8-4204	05-108-4204	End cap
11	8-3331	05-108-3331	Electrode Air, long life. (Pat. Pending)
	9-5619	05-109-5619	Electrode Air (plated), long life (Pat. Pending)
	9-5711	05-109-5711	Electrode Multi Gas
12	9-5702	05-109-5702	Tip 35A - Ø 0,90 - .035
	9-5618	05-109-5618	Tip 45-55A - Ø 1,10 - .043
	9-5707	05-109-5707	Tip 60-70A - Ø 1,20 - .047
	9-5782	05-109-5782	Tip 80A - Ø 1,32 - .052
	9-5708	05-109-5708	Tip 105A - Ø 1,50 - .059
13	8-5129	05-108-5129	Tip Gouging
	9-5709	05-109-5709	Tip Gouging 70A - Ø 1,99 - .078
	9-5710	05-109-5710	Tip Gouging 105A - Ø 2,36 - .093
	9-5713	05-109-5713	Tip Gouging 105A - Ø 2,87 - .113
14	9-5694	05-109-5694	Shield Cup-Crown Ceramic
15	9-5781	05-109-5781	Shield Cup Phenolic Std.
16	9-5617	05-109-5617	Shield Cup Std. Ceramic
17	9-5780	05-109-5780	Shield Cup-Crown
18	9-5799	05-109-5799	Shield Cup
N/S	4-5034	05-104-5034	Air and power cable 25' (7.5 mts) - Hand torch
N/S	4-5035	05-104-5035	Air and power cable 50' (15.0 mts) - Hand torch
N/S	4-5036	05-104-5036	Air and power cable 25' (7.5 mts) - Machine torch
N/S	4-5037	05-104-5037	Air and power cable 50' (15.0 mts) - Machine torch

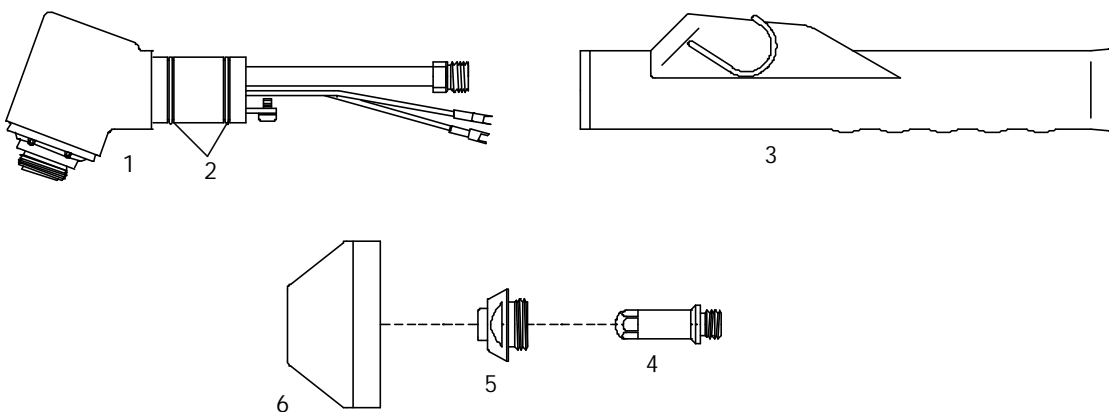
* CIRCLE CUTTING ATTACHMENT : See page # 31

PCH-52P Pak 1250XR



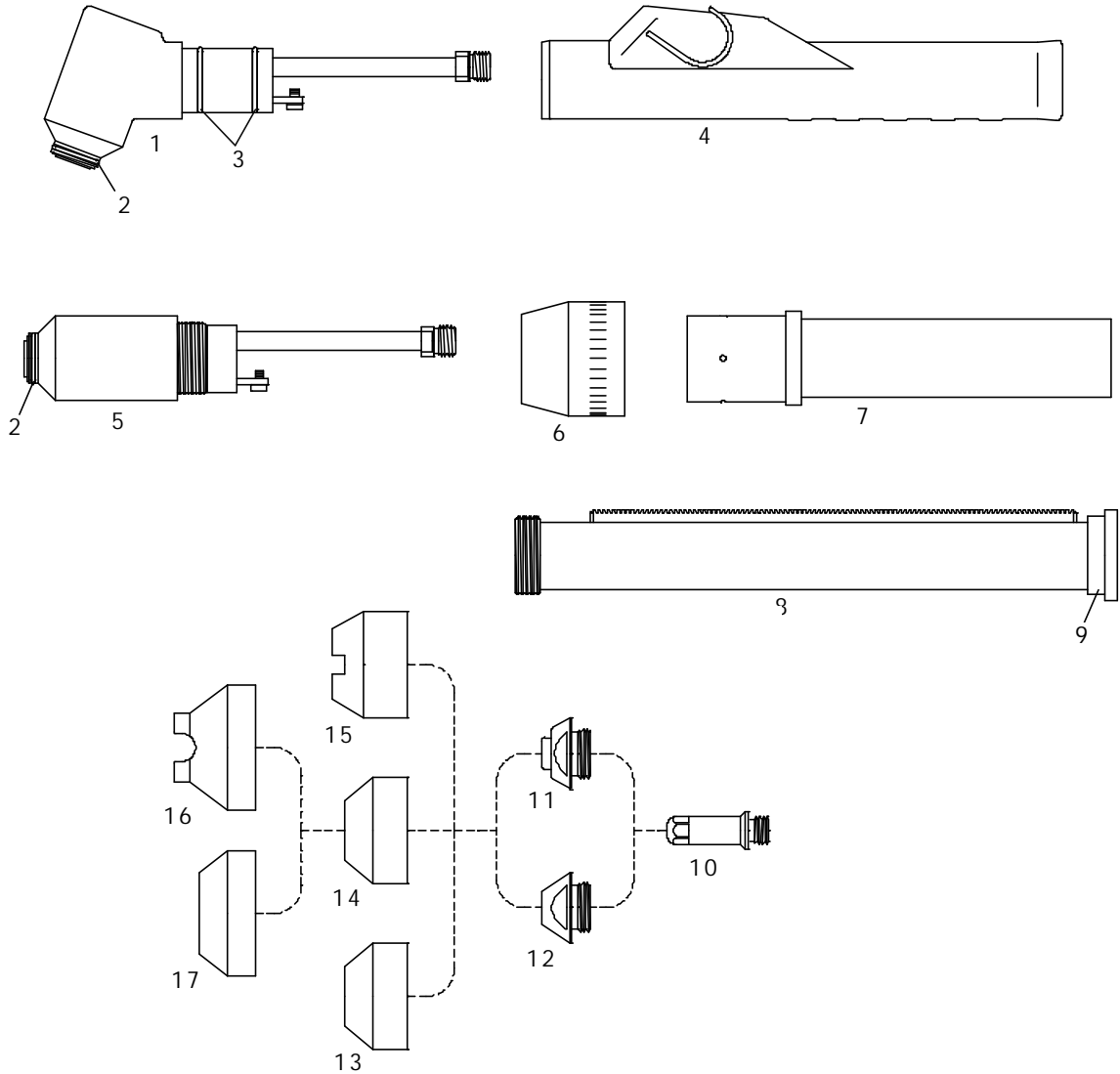
Item	Ref.	Code	Description
1	9-6358	05-109-6358	70° Torch Head
2	8-0536	05-108-0536	O-Ring (20 pcs.)
3	9-5644E	05-109-5644E	Handgrip complete with microswitch (incl. 9-5644, 9-5522, 8-4216)
4	9-5619	05-109-5619	Electrode Air (plated), long life (Pat. Pending)
	9-5711	05-109-5711	Electrode Multi Gas
5	9-5702	05-109-5702	Tip 35A - Ø 0,90 - .035
	9-5707	05-109-5707	Tip 70A - Ø 1,20 - .047
	9-5708	05-109-5708	Tip 105A - Ø 1,50 - .059
6	9-6355	05-109-6355	Shield Cup Std.
7	9-6357	05-109-6357	Shield Cup Standoff Crown (fits over 05-109-6355)

PCH-53P Pak Master 100



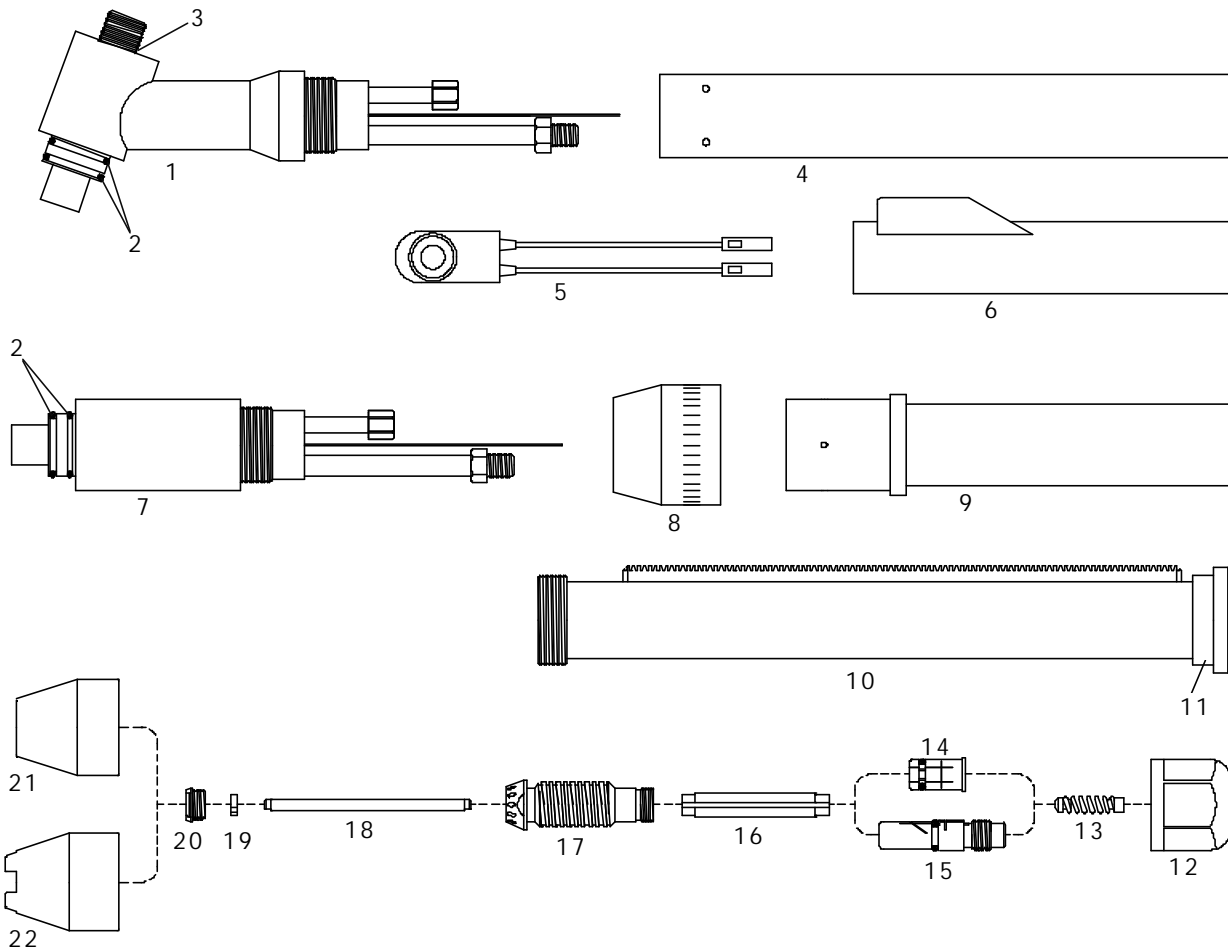
Item	Ref.	Code	Description
1	9-6370	05-109-6370	70° Torch Head
2	8-0536	05-108-0536	O-Ring (20 pcs.)
3	9-5644E	05-109-5644E	Handgrip complete with microswitch (incl. 9-5644, 9-5522, 8-4216)
4	9-5898	05-109-5898	Electrode Air
5	9-5897	05-109-5897	Tip 70A Air
6	9-6355	05-109-6355	Shield Cup Std.

PCH/M-53 Pak Master 100



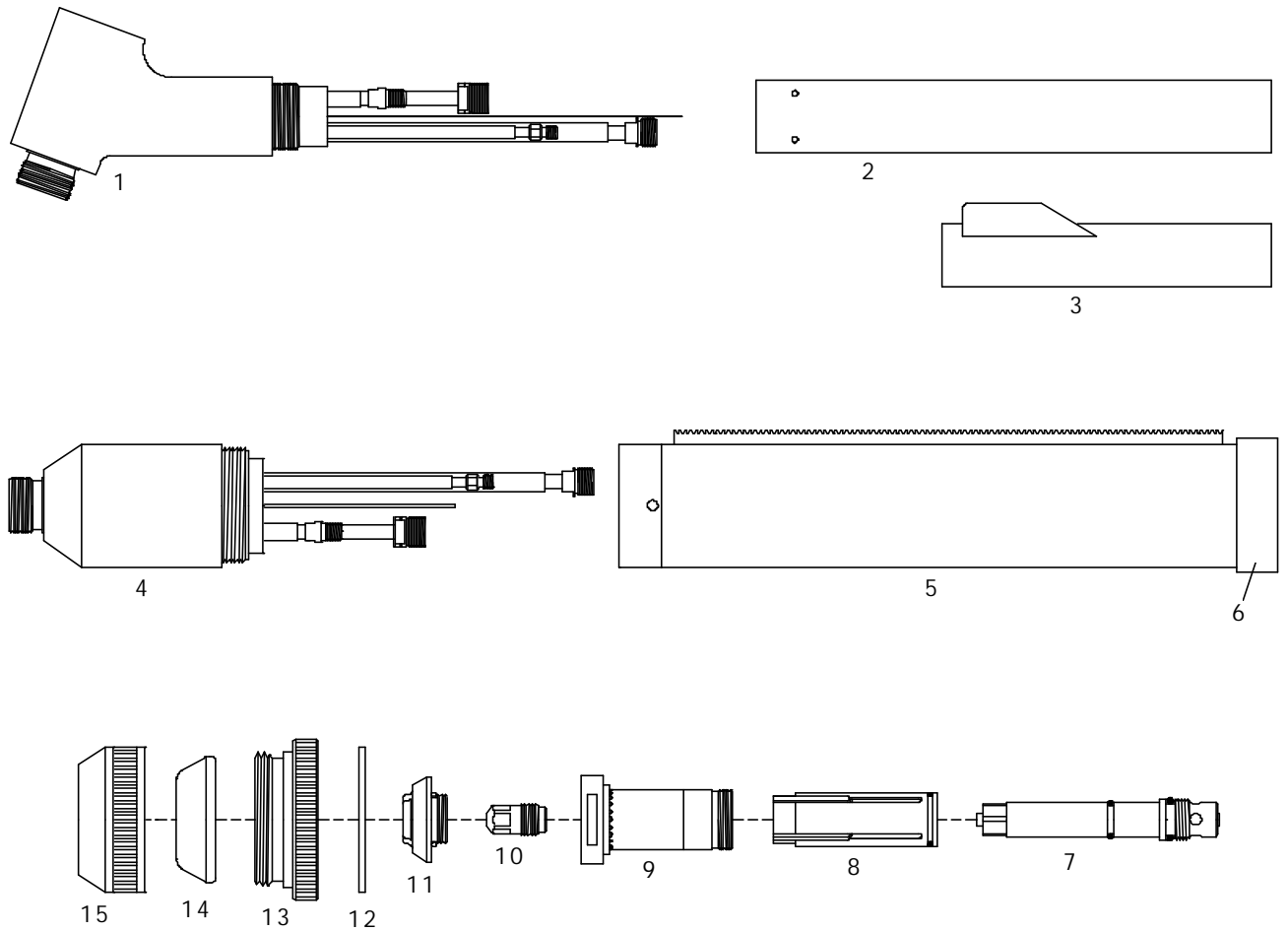
Item	Ref.	Code	Description
1	9-6170	05-109-6170	70° Torch Head
2	8-5525	05-001771-01	O-Ring (Shield Cup), (20 pcs.)
3	8-0536	05-108-0536	O-Ring (Handle), (20 pcs.)
4	9-5644E	05-109-5644E	Handgrip complete with microswitch (incl. 9-5644, 9-5522, 8-4216)
5	9-6180	05-109-6180	180° Torch Head
6	8-4018	05-108-4018	Nut
7	9-1901	05-109-1901	Adaptor
8	8-5005	05-108-5005	Positioning tube
9	8-4204	05-108-4204	End cap
10	9-5898	05-109-5898	Electrode Air
11	9-5897	05-109-5897	Tip 70A
12	9-5709	05-109-5709	Tip Gouging 70A - Ø 1,99 - .078
13	9-5617	05-109-5617	Shield Cup Std. Ceramic
14	9-5781	05-109-5781	Shield Cup Phenolic Std.
15	9-5694	05-109-5694	Shield Cup-Crown Ceramic
16	9-5780	05-109-5780	Shield Cup-Crown
17	9-5799	05-109-5799	Shield Cup

* CIRCLE CUTTING ATTACHMENT : See page # 31

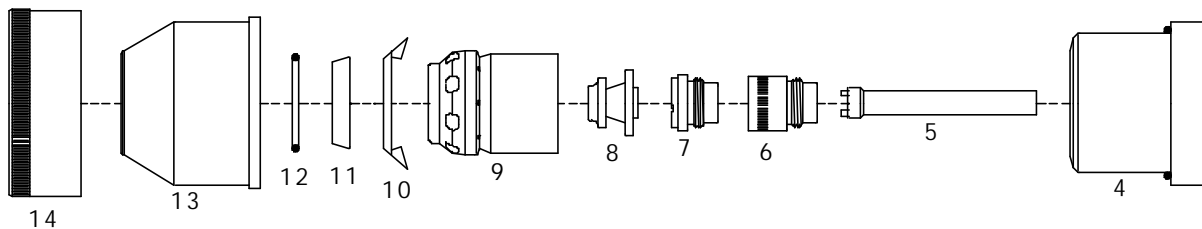
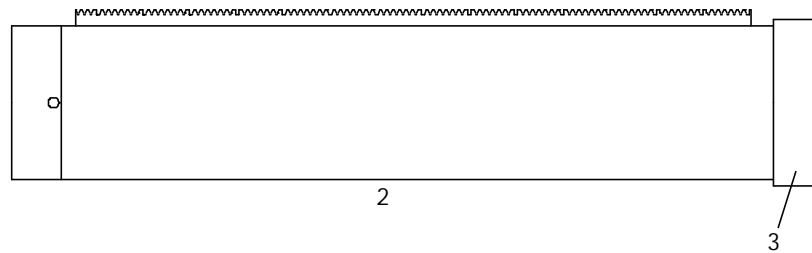
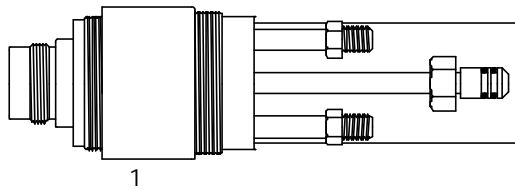
PCH/M-4B(T) Pak-5 (Mech), Pak-10, Pak-10XR (Mech)


Item	Ref.	Code	Description
1	8-4160	05-108-4160	70° Torch Head
N/S	8-4161	05-108-4161	90° Torch Head
2	8-0554	05-108-0554	O-Ring (Shield Cup), (10 pcs.)
3	8-0530	05-108-0530	O-Ring (Back Cup), (10 pcs.)
4	8-5007	05-108-5007	Handle
5	8-4218	05-108-4218	Switch
6	8-4216	05-108-4216	Switch Sheath
7	8-4196	05-108-4196	180° Torch Head
8	8-4018	05-108-4018	Nut
9	9-1901	05-109-1901	Adaptor
10	8-5005	05-108-5005	Mounting Tube
11	8-4204	05-108-4204	End Cap
12	8-4158	05-108-4158	Back Cap
13	8-4050	05-108-4050	Spring
14	8-4156	05-108-4156	Collet Std.
15	8-4197	05-108-4197	Collet (4BT only)
16	8-4182	05-108-4182	Sleeve
17	8-4154	05-108-4154	Liner
18	8-4073	05-108-4073	Electrode
19	9-2421	05-109-2421	Gas Distributor
20	8-4153	05-108-4153	Tip Lo-Amp .059
	8-4189	05-108-4189	Tip Lo-Amp Std. .030 (4BT/5)
	8-4211	05-108-4211	Tip Std. .046 (4BT/5)
21	8-4088	05-108-4088	Shield Cup Std. Ceramic
22	8-4213	05-108-4213	Shield Cup Crown Ceramic

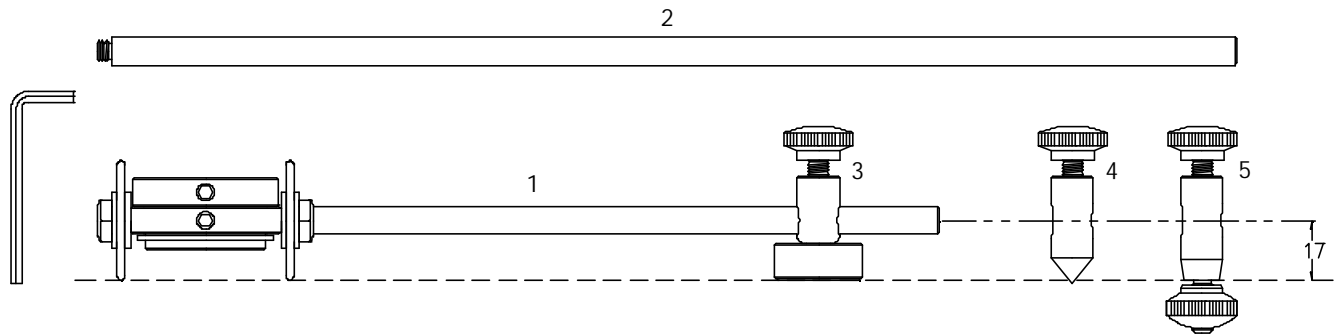
PCH/M-6B Pak-44, Pak-45



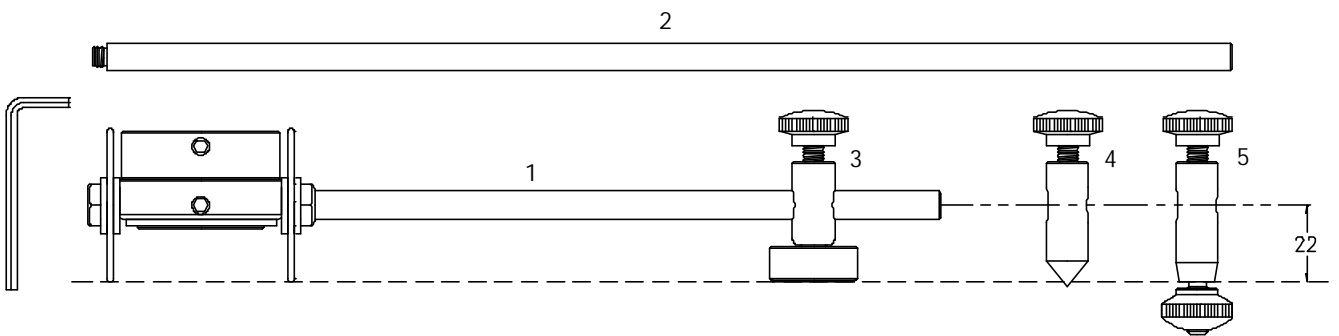
Item	Ref.	Code	Description
1	8-6583	05-108-6583	70° Torch Head
N/S	8-6584	05-108-6584	90° Torch Head
2	8-6519	05-108-6519	Handle
3	8-6564	05-108-6564	Switch/Sheath/Nomex
4	8-6577	05-108-6577	180° Torch Head
5	8-6521	05-108-6521	Positioning Tube
6	8-6522	05-108-6522	End Cap
7	8-6615	05-108-6615	Electrode Holder
8	8-6569	05-108-6569	Gas Distributor
9	8-6571	05-108-6571	Liner
10	8-6578	05-108-6578	Electrode Gen Purpose
	8-6586	05-108-6586	Electrode Lo-Amp
11	8-6580	05-108-6580	Tip 100A .067 w/O-rings
	8-6648	05-108-6648	Tip 150A .076 w/O-rings
	8-6575	05-108-6575	Tip 200A .093 w/O-rings
	8-6582	05-108-6582	Tip 300A .113 w/O-rings
	8-6572	05-108-6572	Tip 400A .125 w/O-rings
12	8-6512	05-108-6512	Gasket
13	8-6581	05-108-6581	Outer Insulator
14	8-6514	05-108-6514	End Piece
15	8-6515	05-108-6515	End Cap

M-200 CC-65, CC-66, TA-500, TAC-500


Item	Ref.	Code	Description
1	8-6054	05-108-6054	Torch Head
2	9-1720	05-109-1720	Positioning Tube
3	8-6522	05-108-6522	End Cap
4	8-6060	05-108-6060	Outer Insulator
5	9-1640	05-109-1640	Coolant Tube
6	9-1642	05-109-1642	Electrode Seat
7	9-1662	05-109-1662	Electrode 1000A
	9-2841	05-109-2841	Electrode Rev Swirl
	9-1641	05-109-1641	Electrode 500A
8	8-6042	05-108-6042	Tip 250A
	8-6043	05-108-6043	Tip 350A
	8-6044	05-108-6044	Tip 500A
	8-6045	05-108-6045	Tip 750A
	8-6046	05-108-6046	Tip 1000A
	8-6068	05-108-6068	Tip 1000A Heavy Duty
	8-6047	05-108-6047	Tip 500A Gouging
9	9-2210	05-109-2210	Inner Tip Retainer
10	9-2451	05-109-2451	Coolant Baffle
11	8-6006	05-108-6006	End Piece-Water Shield
	8-0607	05-108-0607	End Piece-Gas Shield
	8-6029	05-108-6029	End Piece-Ar/H2 Secondary
12	8-0563	05-108-0563	O-Ring (10 pcs)
13	8-6057	05-108-6057	End Cap-Heavy Duty
	8-6077	05-108-6077	End Cap-Underwater
	8-6056	05-108-6056	End Cap
14	8-6059	05-108-6059	Collar



Item	Code	Description
	05-001682-01	Circle cutting attachment for PCH-52, PCH-53
	05-001683-01	Cutting guide PCH-52, PCH-53
	05-001684-01	Circle cutting attachment for PCH-10, PCH-25, PCH-25/38, PCH-26, PCH-28, PCH-35, PCH-40, PCH-75, PCH-76, PCH-100XL, PCH-60, PCH-80
	05-001685-01	Cutting guide PCH-10, PCH-25, PCH-25/38, PCH-26, PCH-28, PCH-35, PCH-40, PCH-75, PCH-76, PCH-100XL, PCH-60, PCH-80
	05-001698-01	Circle cutting attachment for PCH-120
	05-001699-01	Cutting guide PCH-120
1	05-001663-01	Radius bar mm. 250
2	05-001664-01	Radius bar mm. 400
3	05-001662-01	Magnetic base assembly
4	05-001665-01	Free centering straight pin
5	05-001666-01	Straight locking pin



Item	Code	Description
	05-001686-01	Circle cutting attachment for PCH-51
	05-001687-01	Cutting guide for PCH-51
1	05-001663-01	Radius bar mm. 250
2	05-001664-01	Radius bar mm. 400
3	05-001693-01	Magnetic base assembly
4	05-001694-01	Free centering straight pin
5	05-001695-01	Straight locking pin